

Contents

Title	Author	Page
Articles		
24 Acres: Community Orchard Featured Fruits	David Thomas	28
Bottisham and Burwell Photographic Club		17
Burwell Carnival, Saturday 16 th June 2018. Myth and Magic		16
Burwell Museum		18
Burwell Museum Coach Trips 2018		18
Burwell and Reach Car Scheme		7
Cambridge Open Studios Mini-Guide		14
Cambridgeshire Fire and Rescue Service		19
Comberton Ramblers		27
Ely Museum		17
Events Team	Debbie Quilter	4
Gordon Bennett Christmas Show		13
Kryisia's Korner	Kryisia Newman	20
Lode Village Fete		13
Lunchbreak Café		27
Meeting Alex de Giorgio-Miller		3
Reach Church – Detailed Plans		8
Refresh Café at St Mary's		7
St Mary's Church Fete		21
St Mary's Teddy Bears Picnic		7
Rosanna's Ramblings	Rosanna Moseley Gore	12
Scouts at the Community Orchard		37
Swaffham Bulbeck Street Market		13
Swaffham Bulbeck Summer Theatre		7, 25
What Shall We Do With the Old Playground Area?	Alex de Giorgio-Miller	3

Title	Author	Page
Bus Timetable		49
Church		
Church Services and Events		48
Letter from the Vicarage	Eleanor Williams	47
-	Pat Chalmers	
Contact Information		52
Cookery: Food Focus	Catherine Gibson	38
Days Gone By	David Parr	32
Diary Dates		50
Fair Green Montessori	Grace Vincent	36
Family Focus	Tash Bridgeman	33
From the Editor		2
One Hundred Club		
Out and About	Joss Goodchild	22
Parish Council		
Minutes		40
Know Your Parish Council		19
Pets Corner		
Plants and Planting		
Cambridge Botanic Gardens		-
Swaffham Prior Village Gardeners		23
Tales from a Reach Garden	Danuta Gibson	27
Reach Grant Fund		19
Snakehall Farm	Maz Baker	26
Sport and Recreation		
Cricket Report	Ross Clark	39
Lode Half Marathon and Three-Mile Family Fun Run		39
Reach Riders Group	Sue Cameron	39
Swaffham Prior Primary School	-	
Wicken Fen and Anglesey Abbey News		24

From the Editor

The weather has now settled to mostly warm days but leading up to the Fair it was windy, cloudy and exceptionally wet. How could anyone guess that Reach Fair Day was going to be the hottest May Day on record for quite some time. We thank the Events Team for organising this event which takes many months of planning, and they in turn thank everyone who assisted in the days leading up to the Fair, and on the day.



It seems that no one in Reach sits idle because following on from the Fair the Events Team organised a sumptuous and colourful Royal Wedding Picnic; and following on from the installation of the new playground Alex de Giorgio-Miller would like suggestions for what to do with the old playground. Alex is our 'featured villager' this month.

Details plans of improvements and alterations to the church are much advanced and presented in this issue. There will be a meeting on Wednesday 18th July at 7pm in the church to discuss the plans and the extended uses of the church for the benefit of the community. Ideas for the latter include concerts, a library, a café and small meetings. The alterations to the church represent a fantastic opportunity to create a substantial new addition to the village so do come along and contribute.

Tash Bridgeman guides us through half term and days out. Amongst its attractions Burwell Museum has a Classic Car Day, and of course Wicken Fen and Anglesey Abbey are buzzing with things to do. In June and July we enjoy the summer fetes and picnics including launching teddy bears off towers.

Our next issue (August / September) will be No. 50 in this current series of producing the magazine. Do send a photograph/s, note and/or article by way of contribution to this milestone. Fifty is a nice round number (and an achievement) and I am minded to 'hang up my mouse' so if any one – or more than one person – would like to take over the editing of the magazine do let myself or David Parr know. Editing the magazine is interesting, inspiring, rewarding and not nearly as onerous as it looks. I have enjoyed preparing the magazine but now feel it needs a fresh input.

Update: The swan has hatched some eggs this year! Yesterday (27th May) a large fragment of an eggshell was evident beside the sitting swan.

Read this magazine carefully and count how many times the weather is mentioned, and also Christmas

Claire Halpin-McDonald

Reach Fair photographs: Tash Bridgeman, Keith Heppell and Susan Tasasewicz

Landscape photographs: Rosanna Moseley Gore

About the Magazine

The purpose of *Within Reach* is to serve the whole village by circulating information and interesting articles free to every household. Additional copies are available at a charge of £2.50. Issues are published bi-monthly covering the months of Feb/Mar, Apr/May, June/July, Aug/Sept, Oct/Nov and Dec/Jan.

Copies of the Minutes of Parish Council meetings and of *Out of Reach* and *Within Reach* magazines can be found on the village website www.reach-village.co.uk.

The next copy date is 15th July 2018. This magazine is approved and printed by Reach Parish Council.

Editorial Team

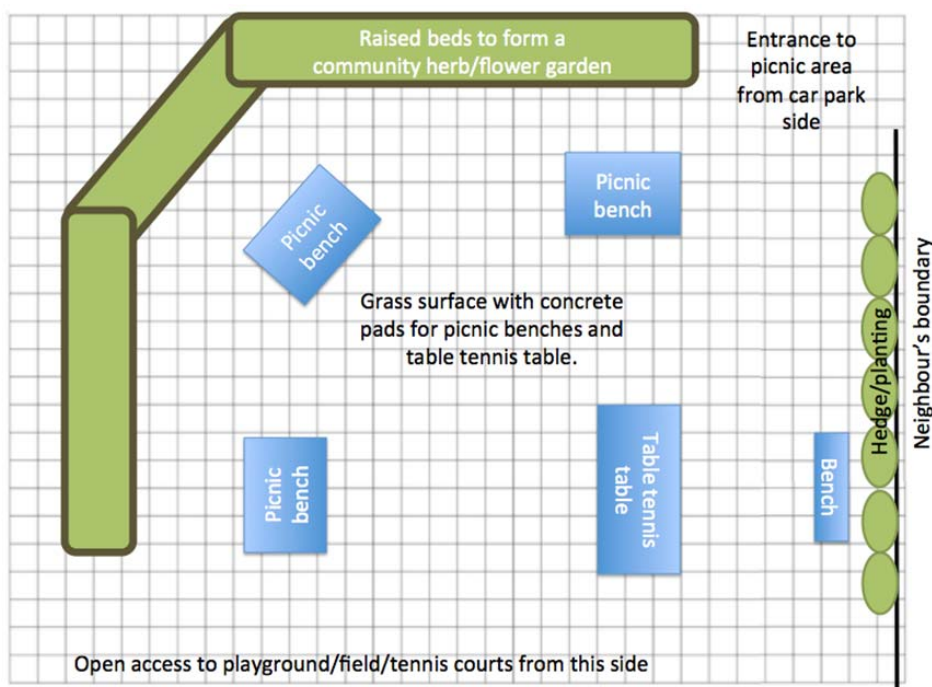
Editor	Claire Halpin-McDonald
Production	Claire Halpin-McDonald David Parr
Advertising/Treasurer	David Parr
Distribution	Freda Lloyd, Grahame Radford
Roving Photographer	Rosanna Moseley Gore
24Acres	David Thomas
Cookery	Catherine Gibson
Cricket	Ross Clark
Days Gone By	David Parr
Family Focus	Tash Bridgeman
Fen Chitchat	Lesley Boyle
Gardening	Danuta Gibson
Kids' Page	
Krysia's Korner	Krysia Newman
Memories	Anita Folkes
Parish Council	Susan Bailey
Reach Riders Group	Sue Cameron
Rosanna's Ramblings	Rosanna Moseley Gore
Snakehall Farm	Maz Baker
Swaffham Prior School	
Wicken Fen	Julia Hammond
Wildlife	Joss Goodchild

What Shall We Do With the Old Playground Area?

With the shiny new playground up and running and being enjoyed by many, we are keen to move forward with plans for the development of the old playground area. The equipment and surfacing will all be removed – it would need extensive repairs to keep it in working order. Several calls to residents for suggestions at events and through the magazine have led to a wide range of ideas being put forward.

We are keen not to open up the access to the field further and so have explored several ideas to maintain the boundary line of the old playing field. We'd be keen to hear any comments on the idea of a raised bed, which could be used as a community herb/flower bed. It could certainly add some colour and scent to the area!

We've included a plan showing just one possible idea for the use of this area, combining several of the suggestions we've had. But we are keen to capture as many people's views as possible – so please do get in contact and let us know your thoughts!



A picnic area has proved the most suggested idea – there have been many users of the new playground and field who have picnicked on mats and suggested benches would be nice! There is potential for this to be combined with a table tennis table if there is a call for it...

Alex de Giorgio-Miller
 Play Spaces Officer
 Reach Parish Council
a.degiorgiomiller@reachparishcouncil.org

Whilst an area for additional sports facilities (basketball hoop / cricket wall / football wall / skate park) is popular, this particular location and its proximity to residential properties is not ideal. There may be potential in investigating other areas where we could develop these in the future.



THE OLD PLAYGROUND LOOKS FORLORN BUT COULD BE TRANSFORMED

Events Team

Well that's it, another Reach Fair done and dusted! A big thank you to all those who helped. One of the best comments I have heard was a compliment from a newcomer who said how impressive it was that such a small village could put on such a professional event. Reach really is a special place!



PHOTOS: KEITH HEPPELL

This is only the second year the Events Team have run the Fair so we are still learning the ropes and there are plenty of ideas for improvements going forward, but we are pleased to have had lots of positive comments.

Personally it was a real pleasure to see the children of Reach making and presenting their May posies this year. They were so well received by the mayoral party and looked fabulous in the photos. Grateful thanks go to Anne Russell who reminded us of this old tradition.

The hot weather had a big impact on the day - more people walked or biked and everyone stayed for a shorter period of time. But it was a truly lovely day.



Events Team

Since then we have celebrated the Royal Wedding with a garden party. It was a lot gentler than the Fair but everyone seemed to love it and big thanks go to Tasha Bridgeman who produced a delightful spread of food for over villagers to enjoy.



Looking forward

Ladies dinner Friday 22nd June

Watch out for more information via email and Facebook for this event.

Sports Day Sunday 1st July 1pm

Please can those of you with trophies get them engraved and returned to me (Debbie) before the event.

Remembrance Day

Sunday 11th November
More details to follow

Updating your details - we are very aware that there are a number of new residents in the village. David Parr holds an email list which he uses for reminders and information. If you are not already on this list and would like to be or your details have changed please contact him on davidparr@btinternet.com.

See the village website for details on all these events: www.reach-village.co.uk/news.html

Email: reacheventsteam@btinternet.com

Find us on Facebook too!

Debbie Quilter



PROVISIONAL ACCOUNTS 2018

Item	2018		2017		2016	
	Income	Costs	Income	Costs	Income	Costs
Commercial Stalls						
1 Bar	£950		£850		£750	
2 Craft Stalls	£1,510		£1,530		£665	
3 Entertainments	£220		£650		£875	
4 Fair + Land Train	£2,568		£2,300		£2,000	
5 Food Stalls + Fish Man	£2,715		£2,540		£1,560	
6 Information/Charity Stalls	£0		£0		£97	
7 Reach Residents Stalls	£20		£20		£0	
TOTAL	£7,983	£0	£7,890	£0	£5,946	£0
Village Activities						
8 BBQ	£1,971	£790	£2,842	£1,082	£2,727	£1,277
9 Bottle Stall	£299	£0	£459		£355	£60
10 Car Park and Traffic Management	£3,356	£2,562	£4,608	£2,812	£2,964	£2,602
11 Coconut Shy	£98	£25	£181	£38	£189	
12 Football Game	£172	£25	£191	£38	£0	
13 Information/Charity Stalls			£0	£50	£0	
14 Other			£0		£195	
15 Salad Stall	£1,213	£211	£719	£166	£589	£98
16 Smash the Crockery			£473		£458	
17 Tea Tent	£708	£305	£1,426	£244	£1,392	£230
18 Village Games	£204	£69	£222	£117	£138	
TOTAL	£8,021	£3,987	£11,121	£4,546	£9,008	£4,267
Other Costs						
19 Advertising/Programmes		£1,331		£658		£240
20 Entertainments and PA System		£3,168		£2,640		£2,300
21 First Aid		£305		£329		£300
22 General Expenses		£408		£524		£384
23 Police		£0		£415		£416
24 Refuse Collection		£552		£552		
25 Straw Bales		£420		£385		£400
26 Toilets Hire		£600		£660		£660
TOTAL	£0	£6,784	£0	£6,164	£0	£4,699
27 INCOME	£16,004		£19,011		£14,954	
28 COSTS	£10,771		£10,710		£8,967	
29 PROFIT (to be transferred to the Grant Fund)	£5,233		£8,301		£5,987	
Investments						
30		A-Frame	£57			
31		Signs - Road and Road Closed	£517			
32		Feather Flag Signs	£350			
33		Tarpaulins	£88			
34			£1,012			

Notes (with line item numbers)

- 4 The land train was complimented by many and we hope to get them back next year and publicise it at an earlier stage to increase useage.
The hot weather resulted in a smaller attendance and people's time of stay. Also people wanted cold drinks and cold food in general and were simply not as "active" in the heat.
- 15 The salad stall did well - supporting our belief that cold food and cold drinks were what people wanted.
- 10 The car park income was down on last year but up on the year before which again shows the impact of the fine weather - we had far more walkers and bikers this year.
- 19 This spend is up because we made a number of "investments" - see lines 30, 31 and 32.
- 20 We invested a little more in the bands who entertained us during the day.
- 23 The police would not attend - even though we were happy to pay for this - we hope to remedy this situation next year.

Overall we believe it was a very good Fair - visitor's and stallholder's comments were generally very favourable.

**Huge thanks go to everyone who contributed during the preparations and on the day
We are a very lucky village indeed!**

Swaffham Bulbeck Summer Theatre

Swaffham Bulbeck Summer Theatre is proud to present a double bill of entertainment in 2018 - Gilbert & Sullivan's enduring operetta 'H.M.S. Pinafore' together with 'Cox and Box', a one-act comic opera with libretto by F. C. Burnand and music by Sir Arthur Sullivan. This was Sullivan's first successful comic opera.

As in previous years the productions will be staged in the wonderful 'Theatre in a Barn', Downing Farm, Swaffham Bulbeck, Cambridge CB25 0NW; dates as follows:

- Wednesday 13th June 2018 at 7.30pm - £8
- Thursday 14th June 2018 at 7.30pm - £9
- Friday 15th June 2018 at 7.30pm - £10
- Saturday 16th June 2018 at 2.30pm - £7 and 7.30pm - £10.

Tickets are available via our website, www.sbsummertheatre.com or by e-mailing sbst.tickets@gmail.com or telephoning 07541 554845. For further information about the show please contact Ruth Dennis on 01638 730659.

Gilbert and Sullivan's 'H.M.S. Pinafore' will be set in 1918, to mark the centenary of the end of the Great War. Sailors and Wrens keep H.M.S. Pinafore ship-shape while their Captain seeks to marry his daughter Josephine to the ruler of the King's Navy. She would rather marry the common sailor of her dreams. In true G&S fashion no one is quite who they seem but in the end all are happy with their lot.

'Cox and Box' is pure Victorian farce/melodrama, telling the tale of two gentlemen who both rent what turns out to be the same room from Mr. Bouncer, an ex-military man. One sleeps during the day, the other at night, but they occasionally meet on the stairs. All goes wrong when one of them is forced to take a holiday! This delightful short piece ends with the discovery that Cox and Box are long-lost brothers.

**St Mary's Little Bears
Teddy Bears Picnic**



**Thursday 5th July 2018
10 - 11.30 am
The Vicarage Garden
22 Isaacson Road
(in church if raining)
£2 per family
Songs, Bible Story, Picnic
Bring your Teddy!
Info: 01638 741262**



Burwell and Reach Car Scheme

If you are unable to use conventional transport the scheme can help you to travel from Burwell or Reach to Doctors, Dentist, Chiropodist, Opticians, village shopping or visits to relatives/friends at home or in hospital

Transport cannot be provided for hospital OutPatient appointments

**Contact Hours: 8.30am – 5.00pm Monday – Friday,
please give us at least 48 hour's notice**

01638 742543 answer phone.

You will be contacted after you have left your request for a journey

**Refresh Café
at St Mary's
Fridays
9.30 - 11.00**

**A friendly café & play space
for babies & pre-school children
with their parents & carers**

**Refreshments, Toys & Games,
Craft, Singing, Bible Story**

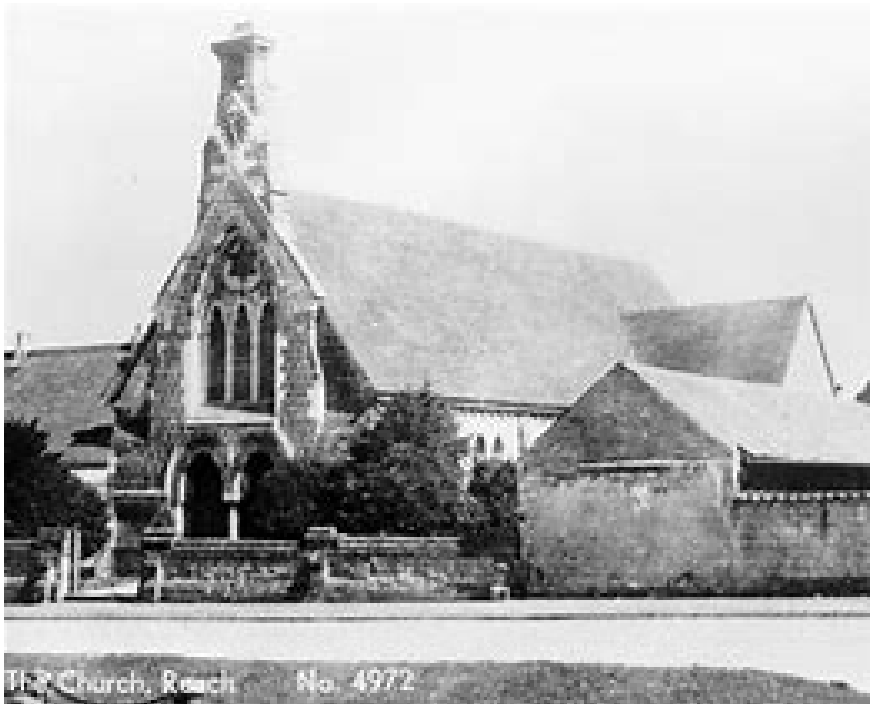
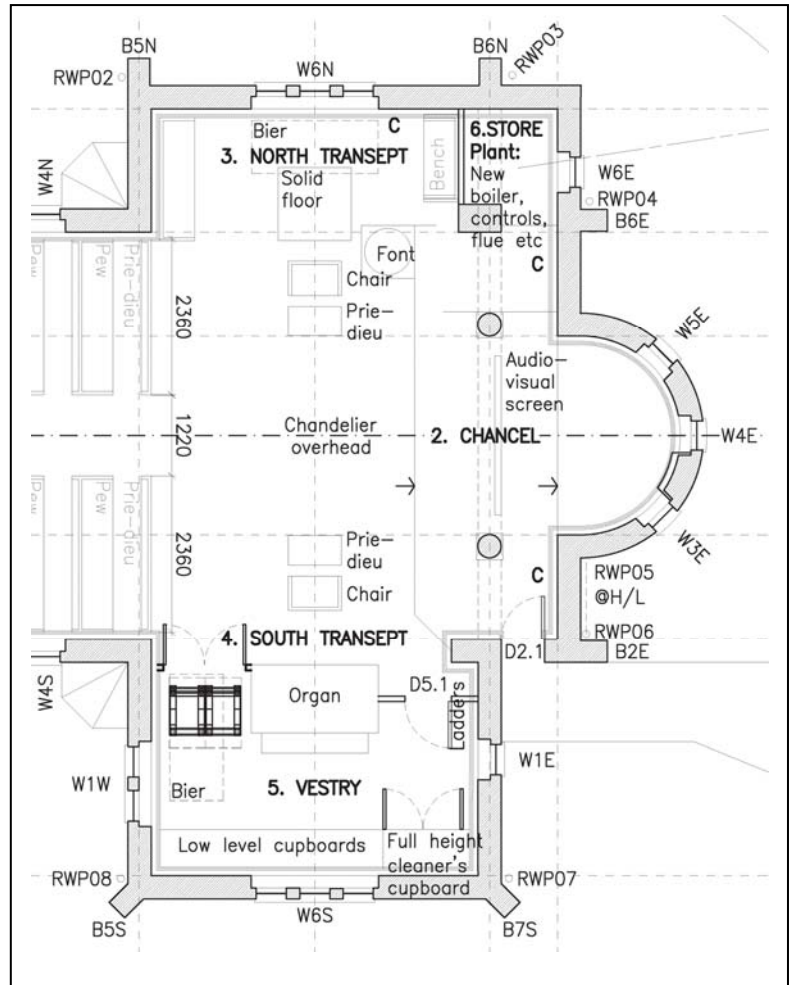




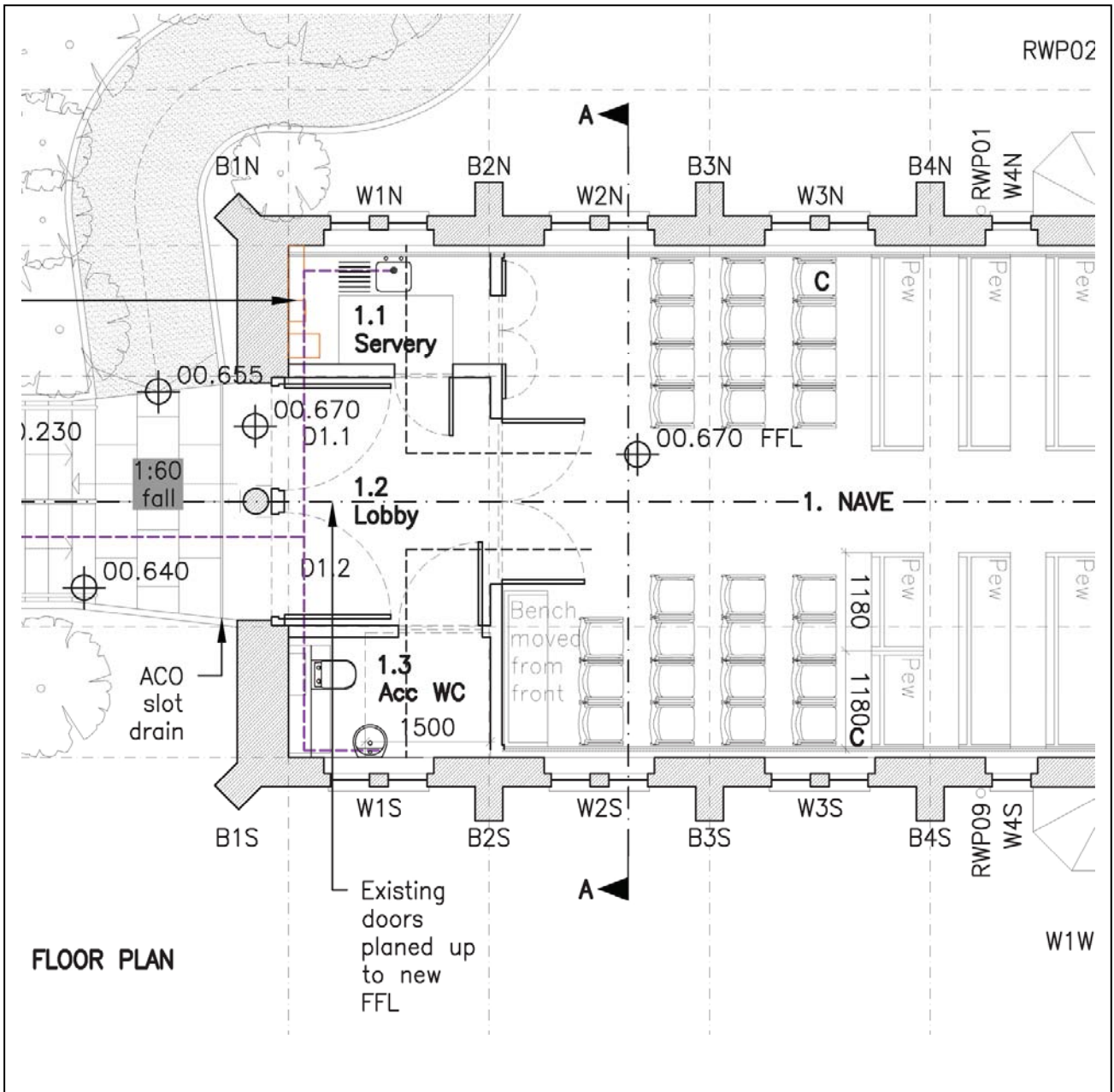
Reach Church – Detailed Plans

The detailed plans have now been on display in Reach church for a few weeks and reproduced here. The plans were produced following various consultations with the people of Reach and also with expert advisors. The aim has been to incorporate as many views as is possible and practically feasible. Inevitably this has meant some compromises have had to be made, because as everyone knows, you can't please all the people all the time! In selecting preferred options, consideration has also been given to future running costs.

During the consultations a wide range of potential community uses were suggested for the building, whilst still retaining its primary function as a church. These included concerts, exhibitions, a library, a café, small meetings, activities for older people, activities for parents/carers and toddlers. Suggestions to expand its use as a sacred space included retreats and quiet days. Some basic developments are clearly necessary for all of these and are outlined in the paragraphs below.



Reach Church – Detailed Plans



An open meeting will be held on Wednesday 18th July at 7pm in the church to discuss the plans for the church building and grounds, including what information we will have by then about the arch.

Please do come along as we really want to hear your views!

If you can't make that date, please send any comments you have to administrator@stmarysburwell.org.uk.

Reach Church – Detailed Plans

Provision of refreshments

The porch screen has been moved a few feet into the church to allow a small kitchen and a disabled toilet to be included, one each side of the porch. At the same time the door entering the church from the porch will be made taller as problems have been encountered with the entry of a coffin at funerals.

Flexible seating

While some people would like to replace all the pews with stacking chairs to give maximum flexibility of space, many others object strongly to this proposal since it would affect the appearance of the church. The compromise solution has been to remove some of the pews, giving a generous space at the back of the church which could accommodate a café or small meeting. The remaining pews will be fitted with castors, so that, if the whole space were needed, for example, for a playgroup, then they could be pushed back to the walls.



Heating

The church building currently has no insulation, so a major proposal is to insulate the roof, the lower part of the walls, the windows and the floor. After carrying out a detailed study of the building and potential frequency of use, our heating consultant concluded that, while underfloor heating would provide a comfortable and gentle background heat, additional heating in the form of radiators would be needed to boost this to a comfortable level when the building is in use. Underfloor heating is particularly useful in a building used most of the time, but would it not be economical to leave it running in a building used only two or three times a week. The current proposal includes both radiators and underfloor heating, since installation cost of the latter is not particularly high if the floor is being replaced anyway.

Reach Church – Detailed Plans

Outside the Church

A new curved entrance path, suitably lit, improves the access for people with mobility issues and children in buggies. An oil tank will be situated at the far corner of the grounds. Since the grounds will inevitably be disrupted by the installation of pipework etc, the project will include landscaping the grounds on completion.



Lighting and Audio visual facilities.

The proposed lighting system includes low energy fittings and enable different areas of the church to be lit separately. Spotlights are hidden behind the beams and can be directed to highlight architectural features.

The audio system is suitable for both spoken word and recorded and live music. It includes an option to broadcast services or other events outside the church as is sometimes required at major weddings and funerals. A retractable screen is housed behind the beam near the altar and when the screen is pulled down it can be used for PowerPoint presentations and film shows.



The Ruined Arch.

The arch is currently in a dangerous condition and we are currently awaiting a surveyor's report on the actions needed to make it safe. Apparently, 'doing nothing' is not an option and so the report and recommendations from our architect will be considered as part of the landscaping plans.

There will be a meeting on Wednesday 18th July at 7pm in the church to discuss the plans and the extended uses of the church for the benefit of the community.

Please come along to the open meeting, if you can.

Pat Chalmers, Church Administrator



Rosanna's Ramblings

The weather on the day of the Reach Fair represented a definite, and emphatic statement of SUMMER, didn't it? And yet we must all have been aware that the heat levels were ... well ... a little bit early in the year. I exchanged conversations with more than a few people (as they cooled down for a bit in the church while browsing the book stall and eating scones) which – to paraphrase – went something like this: "Hot, isn't it?" "Yes, too hot!" "Still, mustn't complain – this might be the hottest day we get this year" ...



It's fair to say that we British like to talk about the weather, complain about the weather, doubt the kind intentions of the weather, suspect it of innate meanness or even malevolence – certainly know it not to be trustworthy. I say "we British" slightly ironically, as I'm British only by birth nationality but not by blood or cultural background. For my beloved Russian grandmother, the ubiquity of weather-based conversations in the third adopted country in her life (China first, then Australia, then finally England in the 1950s) never ceased to amaze her – in Russian culture it is seen as quite bad manners to talk about the weather, the implication being that one can find nothing more interesting to speak about. And when one stops to think about that a bit, it actually makes sense in a context of a pretty reliable climate of cold winters and hot summers, with short springs and autumns in between. I remember, too, once being in California, in a place called Big Bear Lake up in the mountains which boasted a reliable 320 days of sunshine a year – and opening the curtains one morning and sighing "Another sunny day in Big Bear Lake". It was very bright, the sky was very blue, it was very boring.

So here we are in May, with an opulent and blowsy display of hawthorn blossom chasing away the end of the apple blossom in unseemly haste to catch up with itself. A bride may be required to be a little late for her wedding, but it just isn't done for the May trees still to be in full lacy garb (remember those 'meringue' wedding dresses of the 80s?) in June so they just have to get on with it as fast as they can given the late start! Our vegetable garden, which last month

had Charles shaking his head in gloomy despair when contemplating the waterlogged earth and the non-germination of a row of peas (rotting silently and meanly underground), is now also galloping ahead to try to look normal for mid May – potatoes up, broad beans flowering, strawberries really REALLY flowering, shallots dividing. And it is ever thus. Each year brings its excitements and its disappointments, its frustrations and its enthusiasms. It is in the details of how these variables unfold that each year gets its nuanced flavour. But ultimately it is all about transition and change, for us as much as for the natural world.



And while I'm on the subject of transition, let me tell you a story. Some of you may know that I'm a knitter, and when my daughter Natalie was starting her gap year before taking up her place at Fitzwilliam College, Cambridge to study history (casting my mind back, I think this was in 2011, but frankly I can't quite trust my memory), I decided to make her a blanket. The pattern was chosen (an elaborate patchwork of squares with a repeated heart theme picked out in pattern, texture and beading – very lovely), the yarn colours were chosen and I set about knitting the 117 squares by setting myself a target of 5 squares a week over nearly 6 months. Natalie was unaware of the fact that, while I spent endless hours creating them, I was doing more than following the pattern – each heart I knitted, or beaded, held my thoughts for her wellbeing, her hopes, her aspirations, her happiness. I silently wished her good things with each stitch. I wished her well in her journey forward into her own independent life.



My love for her was given material form in that blanket. Even by the time she came back from her travels, I sensed that she had already begun to grow out of it – the colours she had chosen the previous year already seemed a bit ‘girly’, and I wasn’t really surprised that after her first term in her poky College room at Fitz, the blanket was no longer on her bed. So ... fast forward to the end of last year. My children had to do a major sort through of their ‘stuff’ that could no longer be stored by me as I was selling what had been the family home. I asked Natalie what she wanted to do with her blanket, which for some years had been in a carrier bag in my airing cupboard. I knew she wouldn’t want to have it in the flat she shares with her boyfriend in London – they live a very stylish life, in monochrome colours. I asked as much without attachment as I could, and was perfectly prepared to accede to her request that I keep it – her way of saying she valued it, but didn’t see it as having a place in her material world. So ... fast forward again to my world in Reach, and my knowing that the bright blanket in pinks, mauves and blues doesn’t have a place in my material world either. “What to do?” as my Ma used to say. Well, as I write this, Natalie’s blanket is being transformed, as I resolved to dye it indigo and give it a new life and identity. The result is as yet unknown, but by the time this piece makes it into the magazine, so too will be some makeover photos – I leave it up to you to decide which you prefer. But it seemed like a symbolic way of acknowledging that it was made with love, accepted back with love, and ‘upcycled’ with love.

And where will its new home be? Well, most probably in the little house in Ely that I have bought and which will bit by bit be transformed into a town home for Charles and me, to complement our lovely country home in Reach. And my daughter is already looking forward to bringing her London friends to stay for weekends there, so there’s a sweetness in that particular set of transitions.

www.tree-of-life-therapy.co.uk

Rosanna Moseley Gore

**Float in to Christmas with our cockney
Gordon Bennett Christmas Show**

**Enjoy a good sing a long
Laughs with comedian
Traditional Christmas dinner
Aboard the Tereza-Joanne in
Royal Docks, London**

£53 Ticket 27th November

**Tickets from Tina’s or ring Barbara
01638 741581 or 07887 712296**

The 2018
SWAFFHAM BULBECK STREET MARKET
SATURDAY 30TH JUNE



**KIDS ASSAULT COURSE – BBQ – HORSE RACING
CSD BRASS BAND – REFRESHMENTS
PLANTS – CAKES – BOOKS
COLLECTABLES – TOMBOLA – CRAFTS**



Come join the Royal themed parade
(11 am along the High Street – prizes for the best
“Royal Celebration” costumes)



To book a stall, contact Margaret Roberts 01223
811772

LODE VILLAGE FETE

**Sunday 17 June
In the Passage
12 noon – 4.00 pm**

**Another fun packed day
With stalls, Dog Show, food, bar and Tea and Cakes**



Contact chrisiking56@gmail.com if you'd like to run a stall or help on the day

Cambridge Open Studios Mini-Guide

Local Artists

Below are the artists who are local to the area who are taking part in Cambridge Open Studios this July. You will find the information concerning the days and times the artist will be exhibiting as well as their location, the genre of their work and their contact information. Please note that not all of the artists open their studios every weekend. The codes indicating which weekends the artist's will be exhibiting are as follows...

Weekend (1) 7/8 July

Weekend (2) 14/15 July

Weekend (3) 21/22 July

Weekend (4) 28/29 July



JAMIE SUGG

176 Jamie Sugg

Oils, acrylics, watercolours and drawings

Downing Farm, Station Road, Swaffham Bulbeck, CB25 0NW

www.jamiesugg.co.uk

jamiesugg99@btinternet.com

07846 481062

Exhibitions of Fenland landscapes in oils, acrylics and watercolours and wildlife drawings on paper. Greetings cards and gifts for sale. **Weekends: 3 & 4**

177 Paul Abbott

Colourful oil paintings

The Mill House, 11 Mill Hill, Swaffham Prior, CB25 0JZ

www.vividicity.com

paul@vividicity.com

01638 741537

Colourful and uplifting oil paintings from a palette knife. Local landscapes – also coastal, rural and floral. Studio next to the windmill.

Weekends: 1, 2, 3, 4



PAUL ABBOTT

178 David George – *New Member*

Watercolours and oils

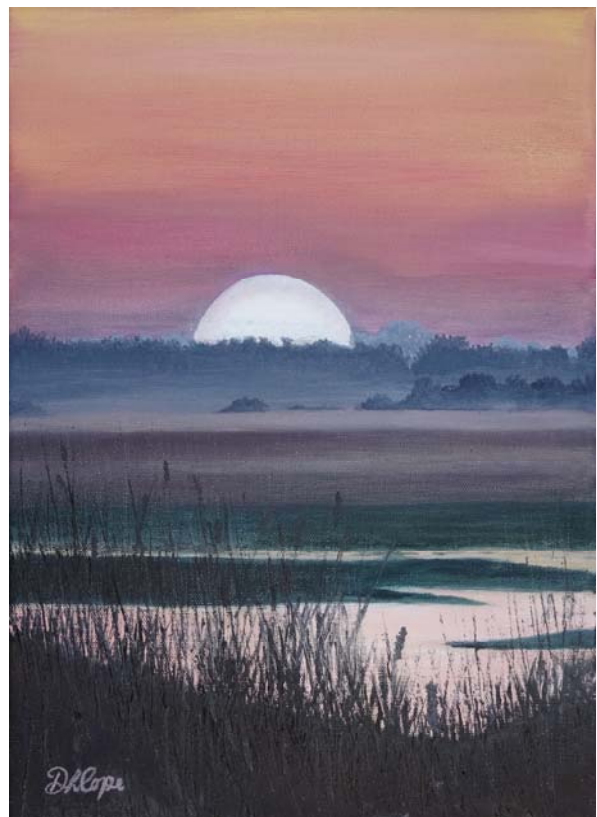
Windmill Cottage, 34 Mill Hill, Swaffham Prior, CB25 0JZ

drgeorge459@gmail.com

07848 182827

Atmospheric and expressive landscapes and still-life in watercolour and oils.

Weekends: 1, 2, 3, 4



DI COPE

179 Di Cope

Landscapes in oil, Conte, charcoal
95 North Street (studio above garage – please use stairs),
Burwell, Cambridge, CB25 0BB

Dicope1.wixsite.com/di-home-page

di.cope1@btinternet.com

01638 601342

Find me at my easel in my studio. Local landscapes in oils and other media. Original works, prints and greeting cards for sale.

Weekends: 1, 2, 3



ANNIE BROWN

182 Annie Brown

Textiles, needle-felted work, oils

75 Station Road, Fordham, Ely, CB7 5LP

www.anniebrownneedlefelting.co.uk

anniebrownneedlefelting@hotmail.com

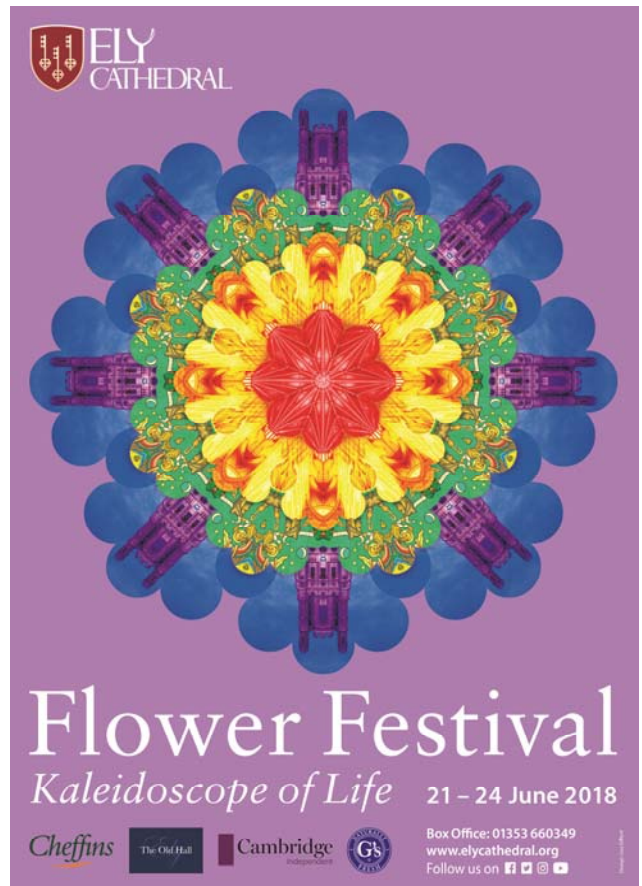
07515 525787

Landscapes and vibrant semi-abstract needle-felted paintings inspired by nature. Felted jewellery. Oil paintings.

On B1102, next to railway crossing Burwell village side.

Weekends: 1, 2, 3, 4

Please see the guide book for a full list of 350 artists taking part this July across Cambridgeshire.



TREE OF LIFE. EXHIBITION OF WORKS BY
HELAIN BLUMENFELD. ELY CATHEDRAL
FRIDAY 13 JULY - SUNDAY 28 OCTOBER

Burwell Carnival, Saturday 16th June 2018 Myth and Magic



After more than 30 years in the running, Burwell Carnival is set to return for 2018 in a magical explosion of mermaids, unicorns, leprechauns and even a game of quidditch (yes, really!) in keeping with this year's 'Myth & Magic' theme.

The day starts with the midday parade, led by its newly appointed King & Queen, departing from St Margaret's Field and winding its way (loudly!) through the village, accompanied by *The Army Cadet Corps of Drums* and *Fruity Clave Band*. This year, we can expect to spot our local groups disguised as an array of mystical/mythical beings, including Fairies, He-man & Skelator and even a Loch Ness Monster!



As always, during the day the arena and stage will be boasting some great entertainment, this year in the form of JezO the magician, quidditch and displays from our local groups of Majorettes, Gymnasts, Karate, Thai Chi, Street Dance, Choir and Stage performers. For the evening entertainment, we are very pleased to welcome back *Vintage Jag*, *Jude Keen* and *Now Wash Your Hands* will once again be keeping us dancing well into the night.



There are plenty of food and drink options that are open throughout the day and into the evening to keep you going until the 11pm close (last orders 10.45pm). Other than our well-stocked bar, you can expect to find the addition of a noodle bar alongside our regular attendees of fish & chips, burgers and other savoury delights. Got a sweet tooth? Doughnuts and ice cream will be plentiful and the wonderful *Burwell WI Belles* will be supplying hot drinks and refreshments.

Whether it's a spot of leisurely shopping amongst the stalls, partaking in the raffle, taking in a magic show, marvelling at the displays, spinning out on a fairground ride, stuffing your face with an array of delicious food or dancing the night away to the evening bands, Burwell Carnival really does have it all! So, grab a friend, relative or colleague and join us for this fantastic FREE family day and night of fun!

Watch out for our Carnival rocks sporting the #BurwellsRockinRocks, and re-hide far and wide to continue Eve Keating's fantastic endeavour to keep Burwell's children interacting with the outdoors and their creativity flowing.



As always, a huge THANK YOU to our sponsors and to everyone that contributes to this great day by attending the comedy nights, buying raffle tickets and dropping coins into the collection buckets. Without you, Burwell Carnival wouldn't be able to continue.

If you want to book a pitch for a stall or help with the carnival in any way, please contact us at:

www.burwell-carnival.info on Facebook @BurwellCarnival or at burwellcarnival@gmail.com

Bottisham and Burwell Photographic Club



CLUB SECRETARY, DAPHNE HANSON, WELCOMING THE PRESENT OF THE EAST ANGLIAN FEDERATION, PAUL RADDEN, WHO OFFICIALLY OPENED THE EXHIBITION AND WHO CHOSE THE BEST PRINT IN THE EXHIBITION BY IAN KIPPAX ENTITLED 'THE LURE OF THE SEA'.

Bottisham and Burwell Photographic Club 45th Anniversary Exhibition took place on Saturday 12th May at Bottisham British Legion Club. The event was well attended with a steady stream of visitors throughout the day both taking in the images and enjoying the tea and home-made cakes which were also available.

The President of the East Anglian Federation, Paul Radden, officially opened the Exhibition and was also given the honour of choosing Best Print in the Exhibition from the 193 high quality entries. The winner was "The Lure of the Sea" by Ian Kippax. Alongside the prints there was also a continuous display of projected digital images which had been entered in the Club competitions throughout the 2017/18 season.

The new 2018/19 season starts at 7.30pm on 11 September 2018 at Lode Chapel with a review of last season's winning images and a selection of images taken over the summer break. New members are very much welcomed and can either join on a club night or even come as a visitor.

For further information on the club please contact the Secretary, Daphne Hanson on 01638 741 106

St Etheldreda's, Reach-Church Open Meeting

Wednesday 18th July 7pm

The meeting will include presentation of latest plans

for development of our building

and reports from our architect

about the arch behind the church

Ely museum

Ely Museum is changing. We moved to the Old Gaol on Market Street 20 years ago and now our displays and facilities are worn and tired. We need better toilet and kitchen facilities for the schools and groups who visit us and we want to put in a lift to help people get around the building.

We are planning to fix these problems with a redevelopment of our building on Market Street, refurbishing the Grade II listed historic building and extending above the existing 1997 block. We received initial funding support from the Heritage Lottery Fund in 2017 and have been working with an architect and designers on what our transformed museum might look like.



The redesigned museum will have new gallery displays exploring the history of Ely and East Cambridgeshire, from what was here before the Fens were formed, who first settled here, what has happened here and how people have lived. Based on surveys with visitors and local people we have learned that many people are very interested to learn more about the unique Fenland landscape and its impact on people's lives throughout time.

A project like this takes a while, and we will be making our second round application to the Heritage Lottery Fund this summer. If we are successful the project will start in 2019, with the museum closing to the public for building work in autumn 2019 and reopening for summer 2020.

A key part of our project will be a new programme of events, activities and volunteering opportunities. If you are interested in local heritage, keep an eye out for updates on our website www.elymuseum.org.uk

Burwell Museum

Thank you for your support!

Thank you very much to the Co-op, all the Good Egg winners and everyone who came to our Easter Egg Hunt – we had just over 400 visitors to the museum in two days despite the typical Bank Holiday weather! It was really great to see so many people enjoying exploring the museum. If you live nearby and enjoy the museum, we are still selling season tickets for 2018 which cost £15 for an individual, £20 joint and £25 for a family of up to two adults and four children – well worth it if you're planning several visits.



Classic Car Day 24 June

Because we were busy celebrating National Mills Weekend in May, we've moved our Classic Car event to June this year – if you would like to bring your car there may still be places, so please let us know. Or come along without a car and see vehicles of all vintages, including our very own Holsman (above) and Austin 7 (below).



Mill and Maintenance Volunteers needed

We're still looking for friendly, community-minded people of all ages to join our volunteer team – we're particularly keen to meet people who are happy to help out with site maintenance and/or to show visitors around our windmill. If you're

interested, give us a ring on 01638 605544 or email volunteers@burwellmuseum.org.uk

Festival Week and Summer fete

We're looking forward to our Summer Fete on the 22nd of July, with half price entry and lots of exciting things to do. We'll also be taking part in festival week with late opening and events on the 14th of June and a stall at the Carnival on the 16th – look out for further information nearer the time!

Holiday Activities

It seems very early to start thinking about the summer holidays, but when they do arrive we will be offering visiting families the chance to be "Museum Explorers" with a range of exciting things to do all over the museum. Activities are every Thursday afternoon from the 26th of July to the 30th of August, from 1.30-4.30.

www.burwellmuseum.org.uk
01638 605544
museum@burwellmuseum.org.uk
Burwell Museum, Mill Close, Burwell, Cambridge
CB25 0HL

Burwell Museum Coach Trips 2018



'Gates' Garden Centre and Stamford,
Tuesday 19th June, £18

Boat Trip & Shopping at Wroxham,
Monday 16th July, £27

Southwold, Tuesday 14th August, £19

National Memorial Arboretum,
Tuesday 11th September, £28

Norwich, Tuesday 16th October, £17

Gordon Bennett Christmas Show and
Traditional Christmas Dinner
Aboard the Tereza-Joanne, Royal Docks, London
Tuesday 27th November, £53

The winter trip is changed due to lack of support. We hope you will buy tickets for our new November venue

**Tickets from Tina's, Burwell on 01638 741581
Or Barbara 07887 712296**

Cambridgeshire Fire and Rescue Service



As the weather brightens up and the sunshine starts brightening our weeks, we welcome the longer, brighter nights and the opportunity to enjoy summer days and nights in the garden.

When powering up your BBQ's and putting out the garden furniture for the summer season, be sure to take note of our top tips below to ensure you have a fun and safe summer in the garden.

- If cooking outdoors, always check barbeques over after winter storage, keep them on level ground and ensure they are sited away from sheds, fences, overhanging foliage and property
- Keep children and garden games well away from the cooking area and never leave the barbecue unattended
- If you have a bonfire, build it well away from buildings, tents or other flammable objects and make sure it is properly out when you leave
- When out in the countryside, extinguish cigarettes properly and dispose of them responsibly – never throw a lit cigarette into a field or wooded area.
- Don't forget to stay safe around our county's waterways and if you see someone in trouble in water, call 999 immediately with clear details of your location
- When out camping or using a tent, never use candles inside or nearby and always discourage smoking nearby. Never cook inside a tent

For the latest news, incidents and safety advice, or to contact us, log on to www.cambsfire.gov.uk. Sign up to email alerts and find us on Twitter, Instagram, YouTube and Facebook.

Reach Grant Fund

The Grant Fund replaces the Amenity Fund and exists to fund community activities in Reach.

Applications should be sent to the Parish Clerk:

Susan Bailey

29 Great Lane Reach CB25 0JF

01638 743794

reachparishcouncil@live.co.uk

June / July 2018

Know Your Parish Council

Your councillors are:

Charlotte Cane	Chair	741064
Alex de Giorgio-Miller	Councillor	07771 348013
Hilary Fielding	Vice Chair	741853
David McMillan	Councillor	741259
Andrew Trump	Councillor	07980 955490
Diana Ward	Councillor	744210

Your Clerk is Susan Bailey

29 Great Lane Reach CB25 0JF; 01638 743794

reachparishcouncil@live.co.uk

Meetings take place in the Village Centre on the first Wednesday of each month. They start at 7.30pm and all Reach villagers are welcome to attend.

In addition to her councillor duties **Hilary Fielding** is Rights of Way Officer.

Music Celebrations International presents
A CELEBRATION of PEACE
In commemoration of the end of WWI
Ely Cathedral
Wednesday 4th July - 7:30pm
R. Vaughan Williams
Fantasia on a Theme by Thomas Tallis
Dona Nobis Pacem
Five Variants on Dives and Lazarus
Sancta Civitas
Featuring
A chorus of 250 voices
from across the **United States of America**
with
East Anglia Chamber Orchestra
Conductors: **Stephen Cleobury (UK) & Craig Jessop (USA)**
Premium tickets £15.00 - Includes preferential reserved seating and glass of wine during interval
General Ticket £10 - Unreserved seating / Concessions £8 - Unreserved seating
Available from: Ely Cathedral Box Office
Tel: 01353 660349 | boxoffice@elycathedral.org | www.elycathedral.org



Kryisia's Korner

So, the sun's interesting isn't it? I don't mean the fictional newspaper. I mean the actual glowing ball of fire in the sky. We all love it when it comes out and doesn't it make everything look so much better?

Someone said to me recently 'wouldn't this country be amazing if we just had the weather?'. I found myself vigorously nodding. Visions formed in my head of cafe culture, picnics, outdoor sports - all the things we could do! Then I started to think a bit deeper about it. Actually, I think we are all the better for the balance we have. Hot and cold - wet and dry (maybe the balance is slightly tipped in favour of the wet and cold!). I feel that I appreciate the sunny days more when I have the balance.

Isn't that true of life too?

This idea of balance in our lives hit home even more at Inspiral Group recently. Matt and I run the Inspiral Group in Cambridge; a spiritual and holistic networking community (every third Weds of the month - for the curious!). We recently hosted a speaker called Richard Abbot - a well respected Numerologist. Numerology is the science of numbers and how they can affect our lives. Richard told us that everyone and everything has a number - or even a set of numbers (I can hear you all saying 'I'm not a number I'm a free man!'). Your primary life path number is derived from your date of birth but you can also work out the number associated with your name. Even place names have them!



Each number has a set of characteristics that you should try and live by and also a set of behaviours that we should try and avoid - if we do that, the theory is that our lives will balance out and be the best they can be. The numbers are 1 through to 9 and also 11 and 22.

I thought it might be fun to show you all how to calculate your numbers and see if the result you get resonates with you. Right, maths time.

June / July 2018

Take your date of birth, and write it down in this format: Birth Date: 4 May 1977

4 = 4

May = 5

1977 = (1 + 9 + 7 + 7) = 24 = (2 + 4) = 6

Then add the totals from each above group

(4 + 5 + 6) = 15 = (1 + 5) = 6

If you get a two digit answer then simply add those two digits together and repeat as many times as necessary until you get a single digit. **Unless your answer comes back as an 11 or a 22 (more on that below).**

So this example person (not my date of birth by the way - I'm much younger than that - ahem) is a life path 6.

Note that the year in the above calculation is reduced to a single number before it is added to the other numbers from the Month and Day.

So, we now have a number! What does that mean though? Well here's a little summary:

1. **The leader.** With a strong sense of independence, you do not like relying on other people, especially if you feel they are holding you back. Often, you may feel like it is better to go it alone. As a Life Path 1, be careful and don't try to control everything and everyone around you as you plough headlong towards your goals. In life it is still beneficial to maintain a balance.



2. **The diplomat.** As a Life Path 2 you will find yourself attracted to a life of building and nurturing relationships. You bring unity and compassion to the world with your big heart and have a tendency to bring out the good in people in your life. One thing to be aware of as a Life Path 2, since you thrive on giving and helping, you can become resentful when someone else's generosity is not returned in the capacity that you give.

3. **The communicator.** People with a Life Path 3 are often artistic. You find ways of creating the most beautiful things in this world such as art, music, literature, etc. You breathe life into culture, and make it seem so simple because of your natural gift for expression. All Life Path 3's tend to enjoy life and all that they can get out of it. The extraverted 3's love being in the spotlight and showing off their talent. On the other hand, introverted 3's lean more toward solitary creative pursuits that can garner them a following without being in the spotlight, such as an artist or writer.

4. **The worker.** The life of a Life Path 4 is one of work and discipline to feel stable. You do not like taking short-cuts and

often feel that the best way to do anything is through dedication and perseverance. The daily rituals of a 4 are often well defined, but may sometimes lead to feelings of being stuck in a rut.

5. The flexible one. The Life Path 5 loves to have variety in life. Anything new is exciting. Whether it is traveling to a place you've never been, or meeting new people, you are always looking for that next experience and adventure. For the Life Path 5 a career that requires you to be in a certain place at a certain time everyday will not be the best situation. Instead you should consider a career that provides a unique daily experience.



6. The harmoniser. The Life Path 6 looks for ways to make harmony with everything you encounter. Whether it is art, music, or relationships, no other Life Path can make things coalesce as naturally as you can. Don't let your innate ability to lead go to your head, this can lead to you trying to control every situation, and that is not what being a 6 is about. Learn to balance 'leading and nurturing'.

7. Seeker of knowledge. As a Life Path 7 you are always looking for the answers. Whether the question is big or small, doesn't matter, it's the glory of finding the answer that drives you. However, because of your desire to process things and stay in your own head, it can take a long time for someone else to get to know you. This can make relationships difficult to flourish and maintain.

8. The powerhouse. As a Life Path 8 you are alive to make an impact on the world through your drive and ambition. You are a person of authority, and material wealth. You will often master the art of being successful in the career of your choosing. You will typically have an issue with authority, whether in the form of a boss, police, government official, landlord, etc. which can get you into trouble.



9. The idealiser. You have great compassion and idealism. You are a utopian, and will spend your life trying to realise some aspect of your utopian dream, sacrificing money, time, and energy for a better world. You are imaginative and creative, especially at harmoniously arranging the beauty already potential in the environment. These abilities can lead you into such fields as interior decorating, landscape art, and photography.

June / July 2018

11. The healer. You know you're different, you don't need other people to tell you that. As a Life Path 11, life is filled with mysterious connections and experiences that just seem to "Pop Up". You're more intuitive, or sensitive, than other people you know. You may have found that your life sways from one intense situation to another. Although this can be draining at times, know that it provides you with a greater depth of experiences so you can grow faster. You are considered the "Wounded Healer", someone who helps themselves by helping others.

22. The master builder. The Life Path 22 is one of the most powerful and influential paths in numerology. Your own abilities may seem overwhelming at times, and difficult to manage, but learning to harness your gifts will allow you greater control over your destiny, and in some cases, the destiny of others. If you embrace the catalyst that you can be, the impact you can potentially have on others is enormous. If you allow fear of your power to stifle you, it can spread like a weed and prevent you from reaching your true potential. The Dali Lama is an example of a Master 22!

I hope that was a fun exercise. Loads more information online if you want to find out more about your number. Don't forget that unlike astrology, numerology does not aim to describe your personality so much as give you a set of values that you should try to live by (or avoid!) to be the best you can be.

By the way, in case you were wondering - Reach is a number 8. Energetically speaking the number eight resonates with the vibrations of riches, wealth, abundance and prosperity. So that's why it's so great here!

Stalls



Teddy Parachutes
from the Tower

Cream Teas

Crafts

Games

St Mary's

Church Fete

Sat 9th June

2.00pm

in the Churchyard

Live Music

BBQ

Free Admission

Out and About

I started this account at Easter before the grey weather gave way to oppressive rain and then days of hot sunshine. Surely the vagaries of our weather are due, in part, to living on an island?

In early April I walked the farm road to Watts' carrot wash, in the fen near Upware. Within a mile I noted Greylag geese overhead and grazing the neighbouring fields, mute swans and a hare, head just visible, sitting tightly in its scrape. A family of five buzzards wheeled and mewed above me and peeping lapwing flocked in erratic flight. A roe deer at the far field margin was flushed by a loose black dog, pheasant and partridge too. I feel it's easy to appreciate the land, farming cycles, seasons and skies in the fens.

Closer to home, two kestrels again position themselves on the slim electric fencepost tops in Gareth and Lesley's field (bordering Reach Wood) and an evening barn owl travels his route past Aves' barn. I read that although the collective name most used for owls is a Parliament, there are lesser known names like Stare, Hooting and Looming. Or there's the descriptive Wisdom of Owls. Which seems to make sense to me.

Thank you Reach villagers who supplied these invaluable wildlife sightings:



Nick Acklam text 'the following are my stand out sightings of the last couple of months:

- 8 March - 20 or so wigeon on a temporary pond formed in the rough pasture between Straight Drove and the Reach Lode.
- 12 March - the number of wigeon had increased to 60 or so in the same place. This time they took off in two flights, whistling as they flew.
- 13 March - two buzzards calling to each other above Reach Wood.
- 14 March - a Barn Owl hunting over the 24 Acre woodland for a long time and without success.
- 17 March - a large flock of Canada Geese grazing Tubney Fen includes a solitary Barnacle Goose. I have seen this confused bird or an identical situation in previous years.
- 28 March - ten Roe Deer at rest in the emerging wheat on the



field adjacent to the 24 Acres - a record number for me at this location.

30 March - woodpecker drumming on the poplars to the right side of Reach Lode.

4 April - Red Kite over Burwell Road on the edge of the village.

8 April - three swallows, the first of the year, perched on phone lines in the village. I was surprised given the wintry conditions immediately beforehand.

22 April - first cuckoo of the year heard by the Reach Lode fishing pit.

23 and 24 April - Marsh Harriers over Tubney.

28 April - a large (2lbs or so) and headless eel on the bank of Reach Lode.

2 May - Two cuckoos sighted together, by the cycle bridge. A couple of wheatears too on Split Drove.

6 May - a solitary Egyptian Goose on Tubney Fen'.



6 April Ron phoned. He'd noted the unusual sight of a pair of shelducks on a patch of grass near Reach Wood. The little owl had returned to their garden. They had witnessed the sight and sound of the (rare) lesser spotted woodpecker.

8 April Nick Acklam emailed - 'more to come for the next magazine but, given its importance in the naturalists' calendar, I wanted to report sighting three swallows in the village this morning. I was surprised given the wintry conditions of late but nature has a capacity to play catch-up'.

13 April Hilary emailed - 'saw two pairs of shelduck on the round bale near Tubney and a few swallows passing through. Lapwing doing pirouette diving display over paddock yesterday and oyster catchers on floodwater on Tubney'.

14 April - Martin and I were surprised to open the bedroom curtains and look a Sparrowhawk in the eye, it was balanced on David Thomas' roof, at Appletree Cottage in Great Lane, opposite.

16 April - We were delighted to see a pair of swallows in the sky above our muckheap field. This their third season nesting in Ron's donated canary boxes at the stables. Spotted a buzzard and heard nearby lapwing from our paddock, a kestrel folds itself away between the bars of the top telegraph pole, in John and Jenny Reed's field. This vantage-perch shared with crows.

22 April Nick Acklam emailed - 'have just heard my first cuckoo of 2018 - calling consistently from the tall scrub between Reach Lode and the SW Fishing Pit. It was lovely this morning. Cuckoo heard four days earlier than last year btw'.

11 May Pam King observed - a small hedgehog was evident on Reach Fair day near the ancient arch.

(We realised that our garden, usually full of birds and noisy, was silent during the Fair, feeders untouched. This was a day for humans to enjoy, all returned to normal once the merriment stopped).

Alison Kohlman saw a fox in Great Lane early one spring morning then husband Tony opened their door and watched the unusual stand-off between a fox and a muntjac on the drive.



14 May Ron and Penny emailed - 'saw two swifts over our barn on May 11th, we look forward to them returning to their nests under the eaves of the barn. We have a great tit nesting in a box on the side of the barn, hopefully hatching out soon. The tame cock pheasant hasn't been able to attract a mate despite looking very handsome. He has become a bit of a nuisance as he arrives at the same time every day to feed with the chickens and follows it up with a walk around the vegetable patch. We see hedgehogs on a regular basis; and hope the badgers don't predate them as they did in Reach Wood last year. The frogspawn in the pond Ron made in his Reach Wood meadow have all hatched safely. It is good to know there is a resident frog population in the wood'.

14 May Hilary emailed - 'Swallows back at stables but several pairs less than last year unfortunately. One grey wagtail seen at the yard. Have heard but not seen blackcaps at the stables. Kingfisher seen several times along the catch water drain behind Rosie's house. Stoat observed crossing the road near stables and Shaun saw a weasel nearer to Swan Lake grain store'.



15 May Claire Halpin emailed - 'After an unsettled period of 'on nest' 'off nest' the swan is settled on her old nest. At one point this season she actually got off her nest and started

building a completely new nest. I'm not sure if she has any eggs - the fox may have got them - but we'll see.....'



Sadly a grass snake on Great Lane didn't quite make the safety of the nearby verge so, a **Pat On The Back** to the person who erected the Slow Down For Hedgehogs sign at the entrance to Reach. These vulnerable creatures deserve consideration.

Joss Goodchild

Swaffham Prior Village Gardeners

Indoor meetings are on a Tuesday at 8pm in Swaffham Prior Village Hall. Details of the summer visits will be confirmed nearer the time.

Membership is £15 per person. New members and visitors are always welcome: £3 per evening.

Chairman: Peter Hart 01638 741681

Treasurer: Maggie Haverson

Joint Secretaries: Margaret Joyce and Mary Hart 01638 741681



Wicken Fen and Anglesey Abbey News

Wicken Fen

Our **Cuckoo Festival** is now in full swing, and the distinctive calls of male and female cuckoos will continue to be heard on the nature reserve throughout the month of June. As cuckoo numbers are in decline, it is with a real sense of excitement that visitors experience seeing and hearing these fascinating birds. We will be offering pop-up ranger walks, and information to visitors about where and when cuckoos have been seen and heard. Boat trips through the nature reserve are available every day too; they are a great way to hear and see cuckoos, and can be booked by telephone or in person at the Visitor Centre (£6 per adult, £3.50 per child, £17.50 per family).



Fen flowers will be in full bloom in June, the perfect time to enjoy the scents and sights of fen wildflowers across the nature reserve. Look out for rare marsh pea, purple and yellow loosestrife, marsh thistle, ragged robin and the early and southern marsh orchids. We will be offering a **Wildflower Wander** on Thursday 21st June from 2-4pm, this is an opportunity to enjoy a guided walk with a ranger to see the wildflower highlights. Tickets cost £5.50 and include a hot drink. To book please visit our website.

If you are interested in local artists and artisans, we also see the return of Nadine Anderson for her popular **Willow Frame Basket Making Workshop** on Saturday 16 June, from 10am to 4.30pm. You can also visit a **Pop Up Gallery** in partnership with the Isle of Ely Festival and East Cambridgeshire Open Studios artists on Saturday and Sunday 23 & 24 June from 10.30am to 5pm. Further details available from our website.

We will be hosting **The Story Orchestra: Four Seasons in One Day** for the first time on Saturday 9th June from 11.30am to 1pm. This is an event for children of primary age that includes story, music and craft. Tickets cost £10 per child (accompanying adults free). Please see www.eboracumbaroque.co.uk for further details and to book.

Further activities for families include **Traditional Mud Oven Cooking** on Friday 1st June, from 10am to 2.30pm, for children aged 8+ and accompanying adults, costing £50 per family for a delicious outdoor cookery activity. Our regular **Mucky Pups** sessions for under 5s continue on Wednesday 13 and Thursday 14 June, from 10.15-11.45am. This month's seasonal fun, craft and adventure theme is 'Bugs and Bees'. Please call the Visitor Centre to book (£4.75 per child, accompanying adults are free of charge).



By the time July arrives, the Fen will literally be buzzing, as butterflies, dragonflies and other insects enjoy the diverse and beautiful plants and wild flowers. We will be offering butterfly walks in the run up to the Big Butterfly Count from 20 July to 12 August, and the British Dragonfly Society (BDS) volunteers will be opening the Dragonfly Centre at weekends; where they will be getting ready for Dragonfly Week from 21 to 29 July. If you are interested in dragonflies, the BDS is looking for volunteers to help man the **Dragonfly Centre** during the summer, please contact Fiona McKenna, Conservation Outreach Officer at: Fiona.mckenna@britishdragonflies.org.uk and see the Dragonfly Centre webpage <https://www.british-dragonflies.org.uk/content/volunteer-dragonfly-centre>

Our annual **BioBlitz** also takes place in July, with events starting early evening on 21st July (evening walk, bat survey and small mammal trapping) and continuing for 24 hours. We will need plenty of help to discover, identify and record the species that we find, so do come along, all ages are welcome. This year we are proud to be included in Chris Packham's UK Bioblitz, see <http://www.chrispackham.co.uk/chris-packhams-uk-bioblitz-2018>

As we reach the end of July, the school holidays begin, and we welcome families to the Fen for some fun in the outdoors. Our summer programme begins on Wednesday 25 July with **Den Building** (Age 3-10), followed by the ever-popular Mud Glorious Mud on Friday 27 July (Age 3+) and **Fenland Fairies and Pixies** on Monday 30 July (Age 3-7).

Please check our website for further information about events and to book: www.nationaltrust.org.uk/wicken-fen

Anglesey Abbey

High days and holidays (5th May – 30th September). Join us this summer as we explore Lord Fairhaven's journeys across the globe in his luxury Steam Yacht, The Sapphire. Discover how his travels influenced his design of the garden,

and enjoy the Dahlia Garden where he entertained his close friends, including members of the Royal Family, upon his return home for the final stages of the flat racing season. Our exhibition will include artefacts never seen before. A digitised cine film taken by Lord Fairhaven at the Cowes Regatta in the 1920s will be on show in the House, after the Conservation Team, discovered it in a trunk in Lord Fairhaven's wardrobe. Important moments in Lord Fairhaven's life such as attending both Royal coronations and his personal friendship with the Royal family will also be explored. His perfectly preserved coronation robes will also be displayed for the first time.

Our restaurant and shop will be offering themed food and products so you can taste and take home a flavour of Lord Fairhaven's travels.



This summer programme includes:

Going Stateside (5 May - 3 June) We focus on Lord Fairhaven's travels and influences from his home continent, North America. For half-term we'll be launching our family passport activity which will run throughout the summer.

Motoring around Europe (4 June - 15 July) After North America, we look at Lord Fairhaven's European adventures in his luxury Rolls Royce. He was also partial to a round or two of golf, with his close friend Lord Inverclyde, who joined Lord Fairhaven on many of his travels.

An Eastern Exploration (16 July - 9 September) Our exploration take us to the Far East. Highlights include games on-board the Sapphire whilst circling India, Singapore and Egypt.

Homecoming (10 - 30 September) Traditionally Lord Fairhaven returned to Anglesey Abbey in September to enjoy the latter stages of the flat racing season where he could entertain guests including Royalty in his Dahlia Garden.

A date for your diary – Tickets for this year's **Winter Lights at Anglesey Abbey** go on sale on Tuesday 24 July. The event runs for 10 nights, over 3 weekends in November (9 - 11, 15-18, 23-25 November). Ticket prices are Adults £15.50, Child £10.50, Family £50.50 (2 adults & up to 3 children), Under 5s & Carers (accompanying a disabled ticket holder) Free. Tickets will be available from the NT Box Office on 0344 249 1895 or online see; www.nationaltrust.org.uk/anglesey-abbey

Julia Hammond

Swaffham Bulbeck Summer Theatre

Swaffham Bulbeck Summer Theatre is proud to present a double bill of entertainment in 2018

Gilbert and Sullivan's enduring operetta "H.M.S. Pinafore" together with "Cox and Box", a one-act comic opera with libretto by F. C. Burnand and music by Sir Arthur Sullivan. This was Sullivan's first successful comic opera.

As in previous years the productions will be staged in the wonderful "Theatre in a Barn", Downing Farm, Swaffham Bulbeck, Cambridge CB25 ONW. Dates as follows:

Wednesday 13th June 2018 at 7.30pm - £8

Thursday 14th June 2018 at 7.30pm - £9

Friday 15th June 2018 at 7.30pm - £10

Saturday 16th June 2018 at 2.30pm - £7 and 7.30pm - £10

Gilbert and Sullivan's "H.M.S. Pinafore" will be set in 1918, to mark the centenary of the end of the Great War. Sailors and Wrens keep H.M.S. Pinafore ship-shape while their Captain seeks to marry his daughter Josephine to the ruler of the King's Navy. She would rather marry the common sailor of her dreams. In true G&S fashion no one is quite who they seem but in the end all are happy with their lot.

"Cox and Box" is pure Victorian farce/melodrama, telling the tale of two gentlemen who both rent what turns out to be the same room from Mr. Bouncer, an ex-military man. One sleeps during the day, the other at night, but they occasionally meet on the stairs. All goes wrong when one of them is forced to take a holiday! This delightful short piece ends with a surprising discovery.



What's Growing on at Snakehall Farm?



Teddy Bear Picnic Fundraiser for Little Miracles

Save the date, grab your teddy and flock through our farm gates on Friday 1st June and donate to the Co-worker's chosen charity - Little Miracles. Our Co-workers will be serving picnic food and refreshments at Snakehall Farm to all comers in return for a cash donation to their very worthy charity. Gates open 12 to 2pm. Be there or be a scare bear!

Find us: The Prospects Trust at Snakehall Farm, Swaffham Road, Reach, Cambs CB25 0HZ

Call us: 01638 741551

Befriend us: Tilly Tractor on Facebook for all the latest growings on at Snakehall Farm and fresh veg alerts to what is hot in the shop right now.

Maz Baker

DO YOU NEED

A PLACE TO GROW YOUR TALENTS?

We currently have one-to-one or supported day placements for people with additional needs to "grow differently" on our 18 acre care farm and on our off-site Garden Team in rural Cambridgeshire

For more details:
01638 741 551
enquiries@prospectstrust.org.uk
www.prospectstrust.org.uk



During the consultations a wide range of potential community uses were suggested for the building, whilst still retaining its primary function as a church. These included concerts, exhibitions, a library, a café, small meetings, activities for older people, activities for parents/carers and toddlers. Suggestions to expand its use as a sacred space included retreats and quiet days. Some basic developments are clearly necessary for all of these and are outlined in the paragraphs below.

There will be a meeting on Wednesday 18th July at 7pm in the church to discuss the plans and the extended uses of the church for the benefit of the community.

Please come along to the open meeting, if you can.

Pat Chalmers, Church Administrator

Tales from a Reach Garden

We seem to have had all four seasons in the last two months: snow in March, gloomy days and heavy April showers, a couple of very hot days especially in time for Reach fair and strong winds which blew leaves off the trees. The weather has fluctuated wildly and a lot of planting had to be delayed due to the cold and very wet soil which was less than ideal for sowing seeds or planting other young vegetable plants. So the polytunnel is still full of seedlings and young plants ready for planting.



SEEDLINGS AND YOUNG PLANTS IN THE POLY TUNNEL WAITING FOR WARMER WEATHER

When the weather did improve – briefly - the soil warmed up quickly allowing the weeds to grow quickly, and curious little volcano shaped mounds of soil appeared in the lawn. We see clusters of these in the lawn or flower beds every spring. They are the exit holes from the nests of solitary mining bees, which have nests underground.



MINING BEE NEST HOLES IN THE LAWN

For a few weeks in spring, they are very useful pollinators in the garden and not aggressive, so we take care when mowing the lawn at this time of the year as the mini volcanoes appear. The female mining bee digs the hole in the ground to create a nest for its eggs and where the young

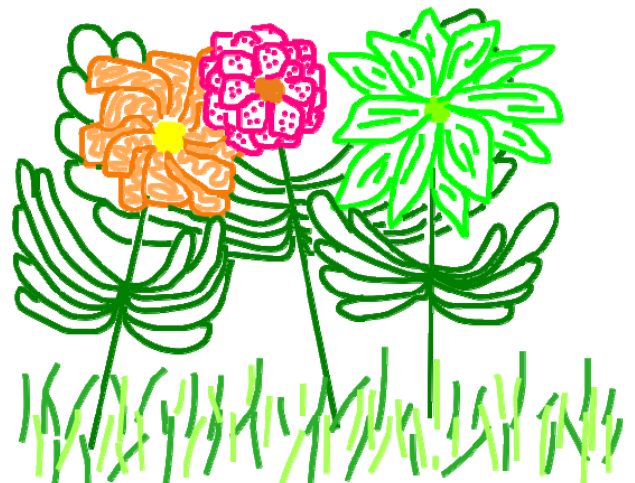
bees develop before emerging the following year. The nests don't damage the lawn, in fact they help to aerate it.



OVERWINTERED CHARD, STILL EDIBLE A YEAR AFTER SOWING

At this time of year not only perennial vegetables like the rhubarb and asparagus are being picked in the vegetable plot. It is true that most of what was planted last year has been eaten, dug up or pulled up. The exception is chard which is usually the last crop to be pulled up - just over a year after it was first sown and often because we need the bed to plant something else, by which time this year's crop of chard will be growing elsewhere. Chard is a very useful and tasty alternative to spinach. Unlike spinach, chard plants are slow to bolt (i.e. produce flower stems) even in hot weather. In fact, last year's crop is only just starting to bolt now in mid May. The chard plants are winter-hardy though they often look bedraggled and windswept in early spring. Some of the leaves can be brown and slimy after cold and wet wintry weather, but the nasty brown bits can be removed and the remainder is perfectly edible, continuing to produce tasty succulent leaves with each cropping of leaves for the dinner table. Some varieties of chard can be ornamental (and perfectly edible) with red, orange or yellow stems and large, glossy, crinkled leaves. Most varieties have white stems and the stems are also edible, though they can take longer to cook than the more delicate leaves. I slice the stems thinly and cook them at the same time as the leaves. Some people like to steam the stems whole, separately from the leaves, as a vegetable in their own right. Whichever way you like to cook them they are worth growing in an ornamental or kitchen garden.

Danuta Gibson



24 Acres: Community Orchard Featured Fruits

Thoday's Quarrenden

This is a mid-late season English dessert apple, raised at Willingham in Cambridgeshire in the mid 20th century by Mr R.E. Thoday of Reedground Farm. It is thought to be related to the early-season Devonshire Quarrenden. The fruits have tender, creamy white flesh with a slightly sharp flavour.



We have three trees in the orchard. Two have been sponsored by Sue Black and the Wenborn family, the third by Philly Bateman (via Ray and Clo).



Victoria Plum

The Victoria plum is by far the most popular plum variety in the UK. It is also probably the most popular fruit tree of any species sold in UK garden centres, being self-fertile and well-known for heavy crops of very attractive fruit with a lovely red-plum colour. English gardeners wanting to grow a plum tree tend to look no further, and with good reason.

The name "Victoria" comes from Queen Victoria (1819–1901). The variety was first discovered in a garden in Alderton, Sussex. It was introduced commercially in Sweden in 1844 by a nursery owner, Denyer, under the name of Denyer's Victoria.

Other foods named after Queen Victoria.

Apparently Queen Victoria was fond of the humble sponge cake, but the version that bears her name is usually served with raspberry jam and whipped cream. She also has an apple named after her – Early Victoria (more commonly known as Emneth Early) that was developed at Emneth in Cambridgeshire and introduced in 1899. It was grown commercially in East Anglia and elsewhere, particularly for jam production.

Victoria really excels as a culinary plum. It cooks to a distinctive pink/orange puree which makes very good jam and a good-flavoured filling for pies and crumbles.

Victoria plums are sometimes considered inferior to other dessert plum varieties for eating fresh. However, this assumption is probably based on the poor flavour of shop-bought Victoria plums, which are usually picked far too early. The trick with Victoria is to leave the plums on the tree until they are fully ripe - the skins will start to become a darker red rather than the more usual orange flushed colour. At this point the flavour, whilst not perhaps comparable with the best dessert plums, should not disappoint.

This combination of excellent culinary qualities along with pretty good flavour for eating fresh makes Victoria one of the most versatile English plum varieties. However, Victoria suffers from two serious problems. Firstly, it has very poor disease resistance to the plum disease silverleaf, a fungal disease that enters through open wounds in the bark, and for this reason Victoria plum trees, like all plum trees, should never be pruned in winter - in fact it is best to avoid pruning entirely with this variety.



Secondly, the wood is brittle, and given its tendency to over-crop, tends to result in branches breaking under the weight of fruit - which of course are then exposed to disease infection.

However, whilst fruit trees that are prone to disease are often best avoided, paradoxically, Victoria is a very easy variety to grow - the inherent heavy-cropping capability means the tree tends to keep going regardless of the inevitable disease and broken branches it accumulates within a few years. It is therefore a very good choice for the gardener who wants to grow fresh plums.

We have two trees in the orchard, one sponsored by Derek Coombes, the other by Trevor Hunt.

Wallis's Wonder

Wallis's Wonder is a very late season English plum. It was developed in the 1960s (by crossing Victoria with the variety Severn Cross) by Eric Wallis, a Cambridgeshire fruit grower, in conjunction with local nursery Simpsons of Fordham, to improve on the well-known but disease-prone Victoria.

We have three trees in the orchard. One has been sponsored by Tony, Rebecca, Archie and Miranda Fordham, one by Dylan Steed and the other by Ross Clark.

Wayside

Wayside is a mid-season dessert apple, probably a seedling of the variety Charles Ross, which it resembles in appearance and flavour. It originates from, Cambridge, having been developed by a Miss Cunningham in the 1930s.

It has good flavour, described as 'sweet/sharp' but doesn't keep well (2-3 weeks).

We have two trees. One has been sponsored by Helen Oliver, and the other by Sue Black and the Wenborn family.

William Crump

This is an intensely flavoured apple that takes its name from Mr William Crump who was the one-time head gardener at Madresfield Court near Malvern in Worcestershire. He is credited with raising the variety and personally exhibited it in 1908 when it received a Royal Horticultural Society Award of Merit.

It was later exhibited by Earl Beauchamp also of Madresfield and won a First Class Certificate in 1910. It was then introduced by Rowe's nursery of Worcester and is a good quality and attractive looking dessert apple, yet not one you will find commercially available today. The fruit are medium to large and with a green to dark red skin colouring. The flesh is firm, crisp and juicy and of good flavour, a nice balance of sweetness and acidity, coming ripe by mid-October with good keeping qualities through until February.

We have two trees. One sponsored by Ross and Jenny Mason, the other as yet not sponsored.

Sources: <https://www.orangepipin.com/> and https://en.wikipedia.org/wiki/Main_Page

David Thomas

The Earl Beauchamp

The 7th Earl Beauchamp was a British Liberal politician. He was Governor of New South Wales between 1899 and 1901, a member of the Liberal administrations of Sir Henry Campbell-Bannerman and H. H. Asquith between 1905 and 1915 and leader of the Liberal Party in the House of Lords between 1924 and 1931.

When political enemies threatened to make public his homosexuality he resigned from office to go into exile.

Lord Beauchamp is often assumed to be the model for the character Lord Marchmain in Evelyn Waugh's novel *Brideshead Revisited*.

Do you need a break in your busy day?

Why not drop in to

LUNCHBREAK CAFE

At St Mary's Church, Burwell

On the 4th Wednesday of every month

Wednesday 27th June and Wednesday 25th July 2018

Open from 12 noon till 2 pm

Whether you work in Burwell or Reach, or your days are filled with the type of work that's unpaid, you may feel in need of an oasis of calm in your busy day. We serve light lunches in the beautiful and tranquil setting of St Mary's, so come along for a break, meet some friends and return to your work refreshed. Children's Corner with books and colouring available.

For more information, contact
administrator@stmarysburwell.org.uk.

Comberton Ramblers

Do you want to keep healthy?
Meet friendly interesting people?
Enjoy nature and the outdoors?
Spend a Sunday morning out in the open?
Enjoy the fresh outside air?

Join us in a walk and see if you like it! We give you two free walks and if you like us we would appreciate that you become a fully paid up member.

Membership fee is £8.50 per person

For further details please contact The Secretary, Stella

Email stella.ramblers@hotmail.com

01954 210049

www.combertonramblers.org.uk

Meeting Alex de Giorgio-Miller

My full name is Alexandra Jane de Giorgio-Miller. Most people assume that Miller must have been my maiden name when in fact the whole name is my husband's. His grandfather came to England from Malta in the 60s with the name Michael de Giorgio. Finding work was difficult so he added his mother's maiden name to his and had far greater success – Mick Miller was far more employable. It's a beautiful name but people struggle to pronounce and spell de Giorgio in the UK. When we go to Malta the reverse is true and they are confused by the Miller! My maiden name is Hunt which was far easier to spell – my students were not impressed when I married and they had to learn my new name!



ME AND MY SISTER ON THE SUFFOLK COAST

I was born and brought up in Epping, Essex with my parents and younger sister. We lived in a fabulous cottage in part of Epping Forest. As children we just opened the garden gate and were off exploring the woods with the dog and the neighbour children. I had an idyllic childhood with a close knit family and parents who were supportive and not pushy. They were, and still are, very sociable and memories of my childhood always include lots of people and laughter. Epping was a relatively quiet market town at that time, and London was easily accessible via the Central Line, so it really was the best of all worlds. We holidayed in Europe often but every year we would spend a month on the Suffolk coast in a caravan. The freedom was wonderful – off early morning with your bike, tennis racket, towel and lunch money and not expected back till dinner. My parents have retired up there now so we're still regulars.

I always enjoyed sports, even if I never really excelled. I was captain of the swimming and athletics teams at school and kayaked and rode horses outside of school. I was a water sports instructor for a couple of summers in America, which was great fun. I was generally a bit rubbish at ball sports but I like the team spirit so I've ended up picking the sports which are less competitive because they're more obscure – lacrosse at university and korfbal when I worked at Pfizer. Nowadays, exercise is running after toddlers and walking the dog!

I quite liked school. I enjoyed the academic subjects but also liked sports and music so I had friends across the spectrum and mostly avoided the cliques by floating between groups. I was a straight A student and head girl but didn't get in to any of the Universities I applied for initially – Veterinary medicine is tricky to get in to, despite having worked on farms, zoos and vets for much of my spare time throughout school. But things worked out – I got a place at Keele University to study Biochemistry and Neuroscience and loved it. Keele is very much a campus university and the community suited me perfectly. I worked at the union bar and played lacrosse and studied fascinating subjects – and had a great time!



KAYAKING WITH MY DAD

My degree included a sandwich placement so I spent a year at AstraZeneca in Macclesfield, which paved the way for me moving into the pharmaceutical industry when I graduated, this time with Pfizer down in East Kent. On the graduate programme I worked on therapeutics to treat pain, HIV and endometriosis in different departments. Looking back it was a pretty cushy job, although at the time I'm sure I thought I was working really hard! Outside of work I had time to volunteer for the Parkinson's disease society supporting hydrotherapy sessions, and the Samaritans, on the phones. I travelled round Japan and Thailand on my annual leave, returning to the latter to do relief work after the 2004 tsunami.



TEACHING WATER SPORTS IN AMERICA

At Pfizer I worked on the same team as my now husband for much of my time there, although we didn't get together until I was already planning to leave. His name is also Alex, which is confusing for everyone except the children, who just think

all parents are called Alex! My step-daughter Sophie thought it was funny to name our dog Alex too – although she gets called Lexie as we soon realised you feel really daft calling out your own name after the dog! We were married in a very small informal ceremony in Suffolk six years ago and I had a lovely red dress – my favourite colour!



OUR WEDDING DAY

After Pfizer, I moved to Birmingham to do an MRes in Neuroimaging at Aston University, which was incredibly interesting, but I found the pace of academia slow and I didn't enjoy Birmingham. The plan was to go on to complete a PhD but there was little funding to be had and I didn't want to compromise. A friend knew I had always done outreach work with schools during my time at Pfizer and Aston and encouraged me to visit the school she taught at. I took in some of my research work and gave some talks at the school and they signed me up on the day. I trained in school on the GTP programme and found it tough but ultimately rewarding. The school was a high achieving school in Hackney, London. The contrast between the students' backgrounds and my own was huge and I learnt a lot from them. The staff were inspirational and it was a great place to train and work.



WITH EVIE AND ANNABEL

After several years in London, we longed for the countryside. My husband found work at AstraZeneca in Cambridge and so I transferred to a school in St Neots. After a year there I got a Head of Science role at a failing school in Cambridge which was parachuting in new teachers to turn it around. We did improve results and I enjoyed the challenge but it was all consuming and the stress of the job wasn't conducive to starting a family. I was offered a role at the Royal Society of Chemistry and stayed there until the birth of our first child, Evie. Originally the plan was to return to work, but I enjoyed motherhood more than I'd been expecting and so remained at home.



IN THE WOODS WHERE I GREW UP PRE-ANNABEL

When I fell pregnant with Annabel two and a bit years ago we put our cute little cottage in Great Chishill (near Royston) on the market and looked for something with more room and a little more child friendly. It is pure luck that we found Reach, and we are so happy we did. It has the community spirit that I grew up with. I do like to get involved (at this my husband rolls his eyes) and am the play spaces officer on the Parish council, sort out the village games for the fair and help organise the village sports day. We've made great friends in the area and feel very settled. I think we'll stay!

Alex de Giorgio-Miller



SATURDAY 16 JUNE, THE MALTINGS, ELY

Days Gone By

The top chart hit at this time in 1985 was "19" – by Paul Hardcastle who was born in London in 1957. The song was there for a total of five weeks and the number 19 in the title was the average age of the American combat soldiers involved in the Vietnam war. The war lasted 20 years, ending in April 1975 with the fall of Saigon to the North Vietnamese and North and South Vietnam were reunited the following year.



In the UK, Hippies clashed with police at Stonehenge. The travellers were on their way to the ancient stone circle in Wiltshire for an illegal festival but were stopped seven miles from their destination by 500 police officers, who blocked a road and refused to let them pass.



What happened next is hotly disputed. Police have said they came under attack, being pelted with lumps of wood, stones and even petrol bombs. But those in the convoy insist that police "ambushed" their peaceful procession of vehicles, methodically smashing windows, beating people on the head with truncheons as they tried to surrender, dragging women along by their hair and using sledgehammers to damage the interiors of their coaches.

The battle of the beanfield, as it became known, was the first major test of an English Heritage ban on midsummer festivals at Stonehenge, this was lifted in 2000 and druids have since shared the site with young revellers who use it as a party venue.

Abroad, the Greenpeace flagship Rainbow Warrior was blown up in Auckland Harbour, New Zealand with one crew member being killed. Two explosions, 60 seconds apart, ripped through the stern and the environmentalists' boat sank in four minutes. A hole measuring six feet by eight feet was found and divers recovered remnants of limpet mines.

The ship was in Auckland Harbour to lead a flotilla of boats to Mururoa Atoll in the Pacific to protest against French nuclear tests there.

Two Frenchmen were charged with arson and murder and further investigation revealed that both the accused, Major Alain Mafart and Captain Dominique Prieur, were secret agents.



The French Government tried to deny their involvement and a major cover-up ensued. By September the French defence minister Charles Hernu had resigned and France paid New Zealand \$7m compensation.

The Rainbow Warrior was raised, to be sunk again further offshore as a marine habitat. A new Rainbow Warrior was launched in 1989 with many of its purpose-designed fittings being paid for with compensation from the French Government.

In 1998 France ratified the international nuclear test ban treaty. By then it had carried out 193 nuclear tests around the Polynesian islands of Mururoa and Fangataufa.

Out of Reach magazine in June talked about the Fair which was blessed, as we were this year, with hot sunshine. All seems to have gone well, according to Steve Neeves, with the only exception being the Jazz Evening which "lacked numbers – and jazz"!

The 1985 Fair raised a total profit of £970, which in today's money would be £2,800 – so the 2018 Fair's profit of nearly twice that amount shows how it has grown over the last 33 years.



Maypole Dancing in the 1980's at Reach Fair

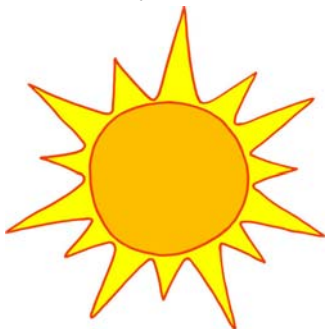
It was also interesting to read that the June 1985 issue of Out of Reach was their hundredth – with the first issue being in September 1976 (the magazines were issued monthly in those days). Coincidentally, the next issue of Within Reach will be a milestone – our 50th!

David Parr

davidmparr@btinternet.com
07887 563720

Family Focus

So after all the excitement of the Fair we have started looking towards May half term, closely followed by the summer holidays.



When Lucy first started full time school I used to think of the approaching holidays with dread, wondering what am I going to do to entertain three children all day every day?! Now we are into the fourth year of her school life and I look forward to the holidays, the times we can

wake up without the alarm ringing in our ears and have our own schedule for the day.

A couple of days before the holidays I sit down with the girls and we write a list, much like a bucket list of activities we would like to do during the holidays then day by day we tick things off the list. Ideas range from movie afternoons, baking at home, a trip out somewhere or it has even been suggested (by Lucy) that we have a trip to Hawaii! That idea hasn't made the list yet.

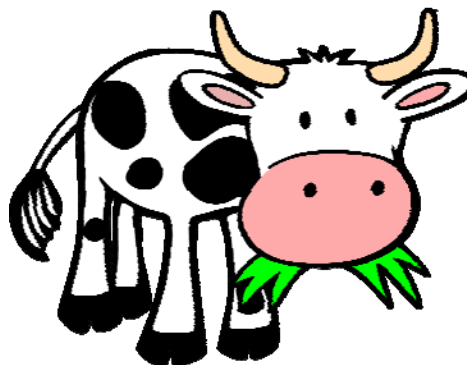


So some ideas for the half term holiday and longer summer holidays include:

A trip to Kentwell Hall in Long Melford, Suffolk. Kentwell is a place I loved to visit as a child. It is a family home dating back some 500 years and is open for the public to visit most weekends. It is set in beautiful grounds and holds many special events throughout the year including re-enactment days which are great fun for children (and adults). A popular event they hold is the Tudor Midsummer weekend which I hope to take the girls to this year on Saturday 16th and Sunday 17th June. There will be over 200 people dressed up in Tudor costume and each year they travel back to a different year during Tudor times, this year they will be going back to 1538. The whole place turns into a Tudor manor and you get to witness a Tudor community come alive including their dress, speech, food, drink, music, dance and crafts as it actually was not just a series of re-enactments. Tickets for this event or just a visit on another occasion are available on line at www.kentwell.co.uk or you can usually purchase tickets on the day. Maybe we will see you there!



A trip we will make closer to home will be to Spring Close in Burwell also known as Burwell Castle. The site consists of the earthworks of an unfinished castle sitting on a raised platform surrounded by a moat which was never completed and never flooded. The site also has a natural spring and is great for a picnic and to explore, rolling down the hills and paddling in the stream. I have many happy childhood memories of picnics at Spring Close (but in those days you had to stop the cows that were grazed there eating your sandwiches!)



If the weather is not to our favour and is wet another trip we will turn to will be to visit Clip 'n Climb in Clifton Road, Cambridge. Advertised as "where climbing centre meets theme park" there is fun for all the family. Climbing is available from the age of 4 upwards and walls range from the more familiar walls to the more extreme stairway to heaven and the vertical drop slide! Booking is essential for Clip 'n Climb so keep your eye on the weather forecast! If the weathers not looking great head over to www.clipnclimbcambridge.co.uk to book tickets and find out more information.

That's all for now but I hope some of you can use some of ideas on days out and have a lovely time.

Tash x



**EDDIE ACKLAM WENT MISSIG FOR 24 HOURS
BUT WAS FOUND SAFE AND WELL**



**TEDDI HALPIN-McDONALD , LOVED SO MUCH,
PASSED WAY 1 MAY 2018**





We thank Helen Oliver for the
photographs of the lambs

Fair Green Montessori

As a new Montessori preschool comes to the village, there has been lots of positive changes taking place. We would like to take this opportunity to introduce ourselves, I am Grace Vincent, the new owner of Fair Green Montessori and The Spring Montessori in Burwell, I am very excited to have the opportunity to provide excellent quality Montessori education to the children of Reach and the surrounding villages. Helen Reader is the manager at Fair Green, working alongside Lottie Caddy and Sarah Hunter, all of which are highly qualified and very passionate about their work!

The children have been taking the opportunity the sunshine has brought, to visit the new playground in the village. This is such a great asset and the children are so lucky to have this right on their doorstep, they particularly love the zip wire! We also love going for walks around Reach woods. We are so lucky to be located in this beautiful village.



We have been busy planting in our garden, now the weather is getting brighter and we look forward to tasting the tomatoes, radishes and carrots we have planted once they are grown.

Reach fair was a very exciting time for the children, as we were able to watch the set up taking place the week before the event, we had lots of conversation about which rides we would like to go on.

We have been learning all about the Royal family recently, with the Royal wedding just around the corner. The children have been busy

making a castle in the role play area, which they have used to host many 'royal banquets'!

The Summer term is a very busy one for us as (some of) the children will be getting ready for 'big school', we have been having lots of conversations about all the new and exciting things they will be getting up to at school, and have lots of visits coming up to both our catchment area schools (Burwell and Swaffham Prior). We will be transforming our role play area into a school, so would very much appreciate any donations towards this (such as old uniform, lunchboxes, pencil cases, stationary etc), thank you.

The future is bright for us at Fair Green Montessori, and we look forward to welcoming lots of new children to our lovely preschool!

Grace Vincent
07792 854360
fairgreenmontessori@gmail
www.fairgreenmontessori.co.uk





**Reach Village Centre
Fair Green
Reach
CB25 0JD**

**Open term time only for children aged 2-4 years
Monday to Friday. 9-1pm**

**Please contact
Grace Vincent or Helen Reader on 07792854360 or
07781753373
fairgreenmontessori@gmail.com
www.fairgreenmontessori.co.uk**



THE SCOUTS LEND A HAND AT THE COMMUNITY ORCHARD



Food Focus. A Delicious Vegetarian Recipe



Sauteed Cauliflower with Spinach and Halloumi

(serves 4)

This Waitrose magazine weekday supper combines great flavours. I've already cooked it three times and it only came out in the April issue. Halloumi is such a substantial cheese it makes a great meat alternative if you are tempted to try meatless Mondays. I haven't served it with pittas as suggested, as I feel this just turns it into a fancy lunch, but twice with tabbouleh and once with new potatoes. Tabbouleh worked better. Cous cous could work well too and I think the whole combo makes this a dinner party worthy meal although it could be a bit fatty and last minute as the halloumi may go rubbery if cooked early.



Ingredients

1 cauliflower (halved then cut into slices lengthways in the direction of the stalk to produce slices)

2 tbsps olive oil plus extra for drizzling

1 tsp caraway seeds

Large pinch chilli flakes

2 garlic cloves roughly chopped

250g pack halloumi

2 tsp zaatar

260g bag of spinach

4 pittas if using/ or other carbs as discussed

Heat the oil in a large, lidded frying pan over a high heat. Add the cauliflower and season. Toss in the pan, for about 2 minutes, until charred in places. Add the caraway seeds, chilli and garlic. Cook, stirring, for 1 minute. Add a splash of water (about 100ml), reduce the heat to low and cover. Cook for 2–4 minutes, or until the cauliflower is just tender.

Meanwhile, pat the halloumi slices dry with kitchen paper, then coat them lightly in olive oil and sprinkle a little zaatar over both sides. Heat a separate large frying pan over a medium-high heat and cook for 1-2 minutes on each side, until golden.

Stir the spinach into the pan with the cauliflower, keeping it on the heat until the spinach has just wilted. Serve with the halloumi and toasted pitta breads, plus some Greek yogurt on the side, if liked.

Ps Farmers Markets happening near you in the next couple of months

Ely – 2nd and 4th Saturday of each month (June 9th and 23rd, July 14th and 28th)

Burwell – 2nd Saturday of each month (June 9th, July 14th)

Cambridgeshire Food and Drink Festival Saturday 23rd and 24th June at the East of England Showground. Legends the Hairy Bikers and James Martin will be demonstrating their very favourite recipes for all to see in the cookery theatre. Not only will you have the chance to be inspired by some of the UK's favourite celeb chefs, the festival will be jam-packed with all kinds of food-related fun and games. Expect hands-on workshops, tasting sessions, superb street food and hundreds of exhibitors. On top of all that, there'll be a vintage fun fair, crafting demonstrations, live music, 'pub quiz' evenings and plenty of activities for your mini foodies to enjoy.

Cricket Report



TAC (203-6) beat Reach (56 all out)

Were it not for the occasional games of cricket played between British and Australian scientists in Antarctica, Sunday 29th April would go down in history as possibly the coldest cricket match ever played. Virtually every other game in Cambridgeshire had been cancelled, but not at the Reach Oval where, having prepared a pitch in warm sunshine the previous week we were determined to use it to some purpose. So the village team faced up to the full might of the Teluga Association of Cambridge (TAC).

The damp pitch demanded that we seize the opportunity to bowl – as much as one can bowl with frozen fingers. We very nearly gained early wickets, too, but for some reason they didn't quite come. It wasn't until the 12th and 13th overs that Will Kingsmill and Rob Steed managed to break through. Then Will had to be removed from the attack when the sole fell off one of his shoes. This proved a bit of a turning point. From there on, TAC gradually accelerated to score 203 over 35 overs. Reach's reply never quite got off the ground: we were bowled out for 56. Then it was back to the pavilion, to sit in front of a roaring log fire and beneath the portraits of Reach heroes of yesteryear. Okay, I made that bit up, but while we sheltered from a bracing nor'easter in a half-built gazebo we really did get a tea of chicken biriyani provided by TAC's chef. So we did manage to break out in a bit of a sweat after all.

It should get a little warmer from here, so don't be put off. We are always on the lookout for new players to grace our ground down on the 24 acre field. If there are any budding or lapsed cricketers who fancy a game we would love to hear from you – if you can email rossjclark@aol.com

Ross Clark

Lode Half Marathon and Three-Mile Family Fun Run

The 8th Lode Half Marathon is fast approaching and this year our charity is Headway (charity no. 1025852), who work to improve lives after brain injury. Over the last 7 years we have had great support and raised over £25,000 for charity and local causes.

ENTRY open from Monday 23rd April so if you are a runner please get your entry in as soon as possible. If you are not a runner but would like to help with **stewarding** please get in touch. It is being held on **Sunday 4th November 2018** at 10am – our race HQ is the Passage Hall in Lode. The Family Fun Run will start at 10.15am.

The course is flat and takes you from Lode village, along the "Lodes Way" to Wicken Fen and back, with water stations along the way. Trophies will be awarded and each runner who completes the course will receive a medal.

(See our website for further details and on-line booking form – www.loderunners.co.uk or contact Tessa Shrubbs on 01223 811812 or email: lodefarm@aol.com) Many thanks to the following companies who are so far sponsoring this year's event: **Mead Construction & Plant Hire, Laragh Homes, Scotsdales Garden Centres, Tesco Fulbourn, Bottisham Village Stores, Create Signs and Halls of Cambridge**

Reach Riders Group



The Reach Riders Group Committee consists of

Sadie King (Chair)

Sue Cameron (Secretary)

Claire Halpin

Gemma Rolfe

Liz Tabecki

Anyone interested in joining should contact Sue Cameron for a membership form, terms and conditions and disclaimer. Email ewenandsue@btinternet.com or Tel 07879627859

Parish Council Meeting Minutes



PARISH COUNCIL

Minutes of Reach Parish Council meeting held on: Wednesday 7th March 2018

Attendance

Charlotte Cane	Chair	Present
Hilary Fielding	Vice Chair	Present
Alex de Giorgio-Miller	Councillor	Present
Diana Ward	Councillor	Not Present
Andrew Trump	Councillor	Present
David McMillan	Councillor	Present
Susan Bailey	Clerk	Present
Allen Alderson	District Councillor	Present
Joshua Schumann	County Councillor	Not Present

Apologies for absence - received from Councillor Ward, and approved.

Forum for members of the public.

There were none.

1. Declaration of interests

There were none.

2. Reach Fair

Preparations for the Fair are proceeding well. The PC had received risk assessments. No financial advance will be required.

A discussion took place regarding the difficulties of traffic management of vehicles leaving the Fair and joining pedestrians on the Burwell Road. **Clerk** to highlight to the Events Team.

Reach Riders had shown concern regarding charges being made to them for a stall at the Fair. The PC were sympathetic to their concerns however, it was stated that it is the Events Team who are running the Fair not the PC. **Clerk** to discuss with the Events Team to enquire as to whether all village groups are treated the same. The PC would like a principle to this effect to be established.

3. Planning

17/02027/FUL Amendment to proposed garage site SW of 48a Great Lane

The previous planning consent was given, stating that there should be no more building on this site. The landscaping and retaining wall now make the build even larger. Additionally, the retaining wall makes it impossible to park in the garage.

The **Clerk** will also ask for clarification regarding the previous planning consent. Confirmation will be requested that all conditions associated with the previous planning consent have been met, as work has already started, along with details as to where this information can be found.

18/00121/FUL Snakehall Farm

The PC are in full support of this application. It is a good use of the pre-existing building, and all materials to be used are fully in keeping with the site. **Clerk** to write supporting the application.

4. County Councillor's Report

None received.

5. District Councillor's Report

In the recent bad weather, it is important to use the salt bins in our ward to help keep the roads clear. If any bins need refilling, they will do so if the parish council notifies the highways department.

During February I attended a Swaffham Internal Drainage Board Meeting, also a planning committee meeting and a Full Council meeting where we passed our budget for the 2018/19 year.

It was very pleasing that we were able to freeze our element of Council Tax for a further year. What is particularly significant is that this has been achieved despite a reduction in Government grant from £659K in 2017/18 to £354K in 2018/19.

Financial challenges lie ahead, but the indisputable fact is, we are currently outperforming all of our neighbouring authorities.

On March 2nd as part of our policy of working with and understanding the needs of our districts businesses we visited Turners Food Packing Plant at Fordham. They supply all of the major supermarkets in the UK and they process 100 million punnets of citrus fruits such as grape/limes/oranges and pineapple a year.

They employ over 1000 workers, most of whom are local, plus about 500 seasonal Eastern European workers when needed.

They set a very high standard of cleanliness within their plant and are a credit to the food processing industry.

Councillor Cane ask for more details on financial forecasts and budgets. **Councillor Alderson** to make enquires and respond to the PC.

6. Minutes of previous Meeting

Approved as correct.

7 (1) Parish Council Grant Fund

No applications received. Reach Riders have spoken with Councillors regarding the possibility of the Grant fund paying for the menage to be cut along with the 24Acres. This is unlikely to be something the Grant Fund can take on as this will be an ongoing commitment. Other specific areas of the village mowing contract are paid for by each separate group. The PC think that it would be beneficial for there to be a meeting between the group and the PC to establish full details. **Clerk** to write to the group.

7(2) Financial Reports

The streetlight donations have been allocated and the excess of 82% will be returned. Clerk had contact Barclays bank regarding signatories. All Councillor to be added.

7(3) Parish Council Members Meetings

Councillor Fielding attended the Police Commissioner's meeting in Burwell. The meeting mainly talked about what the new Commissioner would bring to local policing in general.

When asked about the recent traveller problems and lack of police assistance, it was stated that travellers going onto private land is a civil issue of trespass not unlawful. The only time police can get involved is if damage is done. The Police Commissioner is supportive of the Neighbourhood and Countryside Watch scheme.

Steve Boreham has had further discussions with Anglian Water. It seems that the source of the directive to discontinue community development of The Hythe within the Anglian Water Management structure has been almost impossible to trace. In fact, everyone spoken to at AW thinks that it is a good idea and should go ahead. Thus Steve concludes that it is still worth pushing AW to consider allowing some form of community development of The Hythe. Councillor Trump had also spoken with a chap at Anglian Water who agrees that the opportunity is a possibility. **Councillor Trump** to discuss with Steve Boreham.

7(4) Play Spaces

New playground: Due to a missing part and the snowy weather, the opening of the new playground was slightly delayed. The safety inspection has now been completed and the playground is open. **Councillor de Giorgio-Miller** to fence off the area where the grass seed has been put down.

The clerk is still getting quotes for the remainder of the playing field hedge cut.

The Grand opening event is scheduled for 11am 24th March and will include a ribbon cutting followed by a treasure hunt, popcorn, cupcakes, freebies and face painting. Kompan are bringing a photographer and videographer and the local press have also been invited.

Ideas for old playground: Councillor de Giorgio-Miller is looking into associated costs for several of the suggestions for the area where the old playground is: a picnic area, a skate area and additional sports equipment; and for the removal of the old playground to turn it either to grass or concrete. Swaffham Bulbeck PC have been contacted regarding the laws/rules/insurance implications of a public BBQ but a response has not yet been received. There will be a display at the grand opening of the new playground showing ideas for the old playground area. A wider consultation with residents on any proposals will be necessary.

7(5) Rights of Way

Highways had been notified that our salt bins were nearly empty. A resident had also highlighted that the bin on the corner of Great Lane and The Hythe was damaged. **Clerk** to contact CCC.

The PC would like to thank those residents who spread salt in the recent bad weather and ask that if anyone notices the supply getting low or damage to the bins to please contact the Clerk.

The fly tipping on Little Fen Drove had been reported but was still there. **Councillor Alderson** to question why it had not been removed.

7(6) 24Acres Committee Report

Tree growth has been impressive in some areas. The 12th December 2018 will be the woodland's 5th birthday, and certainly something to celebrate. Small random clusters of poor survival, have traced, almost certainly due to poor planting technique. However, overall survivorship is excellent.

7(7) Friends of Reach Wood

Following renewed consultation amongst FoRW on the ragwort weed-wiping plan, it was concluded that for this year only, Reach Wood Meadow should be cut (with a bar cutter) in late May - early June by our contractor (but paid for by The Woodland Trust). The WT would then get it's contractor to weed wipe the emerging ragwort in mid-late June. At the same time, WT would attempt to cut back invasive scrub. Reach Wood Meadow would then be cut (with a bar cutter) as usual in early September (paid for by The Woodland Trust).

The PC is grateful to Steve Boreham for his work on Reach Wood, 24Acres and The Hythe. The PC would be very pleased for Steve to continue to report on these areas of interest.

8. Standing orders, Social Media policy & Emails accounts

This was deferred to next month, due to Councillor Wards absence. The new email accounts are now available.

Clerk to take advise from CAPALC regarding the continued publication of Councillors private telephone numbers.

Councillor McMillan to document details of the new IT system.

9. Mowing Contract

The Mowing contract is up for review. It was agreed that the new contract will be a five-year contract due to the difficulty of obtaining quotes. **Clerk** to attempt to obtain 3 quotes for the next meeting. Additional costs for mowing the cricket pitch and the Menage will be added as information for these groups.

10. GOBA agreement and Reach Lode

GOBA are very happy to continue with this arrangement. **Clerk** to meet with GOBA and finalise details.

11. Polling District Review and Community Governance Review

There will be no change for our area. No comment to make.

12. Cambridge Waste Incinerator public meeting

The meeting is to be held on 20th March at Waterbeach. Several Councillors are interested to attend.

13. Information Items/AOB

There had been another accident on the first bend on the Burwell Road. **Clerk** to discuss with Joshua Schumann County Councillor.

14. Payments

E.on – Power on the green £10.06

CCC – Streetlight project £553.57

D McMillan – Domain name registration £28.78

D Parr – Brass band Christmas event – Grant fund £120 – unpaid last month

Streetlight donation percentage return - approved

N Acklam £205

N Bridgeman £205

J Cole £369

T Jordan £82

K Lambert £205

P Lewis £205

H Oliver £82

D Parr £410

D Quilter £ 205

J Reed £164

A Rickard £205

A Russell £82

D Ward £61.50

H Webb £410

N Wenborn £61.50

The date of the **next meeting** will be **Wednesday 4th April 2018 at 7.30pm** unless otherwise required. The Agenda for the meeting will be issued by the previous Wednesday and can be accessed from the Parish Council area of the Reach website (www.reach-village.co.uk).

Chairman:

Date:



PARISH COUNCIL

Minutes of Reach Parish Council meeting held on:

Wednesday 4th April 2018

Attendance

Charlotte Cane	Chair	Present
Hilary Fielding	Vice Chair	Present
Alex de Giorgio-Miller	Councillor	Present
Diana Ward	Councillor	Present
Andrew Trump	Councillor	Present
David McMillan	Councillor	Present
Susan Bailey	Clerk	Present
Allen Alderson	District Councillor	Present
Joshua Schumann	County Councillor	Not Present

1. Declaration of interests

Councillor Trump declared an interest in the Cricket Club/mower discussion.

Forum for members of the public.

A member of the Cricket Club attended the meeting to discuss their application for Grant fund money & a PC loan to buy a mower. Following discussion, it was agreed that the PC and Grant fund would purchase the mower. The Cricket Club would donate £500 to the grant fund, mow the cricket pitch, the Manege, the 24Acres paths and orchard as required. The mower would be available for the village should it be necessary. The cricket club would also store securely, maintain and service the mower. The PC will cover the insurance.

2. Reach Fair

Preparations for the Fair are proceeding well. All the health and safety, insurance, St John's Ambulance and other services etc are in place along with the risk assessment. Logistics (bins, toilets, traffic etc) are all finalised.

All the catering and entertainment have been finalised; schedules will be available shortly. This includes the usual maypole dancing. Stalls are almost all full of a nice mix of arts, crafts and produce along with a couple of charities.

Village involvement continues to be strong and the village stalls are going well.

The location of a few things has been changed based on both space availability with both playgrounds being in place & also feedback from last year.

There is an active following on social media and the website is attracting good traffic.

The finances are looking good and the Fair should start on an even keel

There are concerns about the state of the entrance to the top field. The playground works repairs are underway but the weather conditions have made the ground condition poor. There will be upwards of 70 vehicles ranging from cars (stallholders) to vans (food vans and rides) to tractors (straw drop off) entering the top field over the course of the Fair weekend, followed by all the visitors (4,500+ last year). Plans will be made to allow safe access for vehicle and visitors.

3. Planning

18/00285/FUL Dykes End House – Internal & external adaptations for disabled use. No comment to be made.

4. County Councillor's Report

None received. **Clerk** to contact Cllr Schumann and ask whether, if he cannot attend, it would be possible to receive a written report.

5. District Councillor's Report

Residents who ordered their second blue bin will now begin to receive them as ECDCs trading company East Cambs Street Scene prepares to start delivering waste and street cleaning services. This move has enabled the council to provide residents with the option to acquire a second blue bin for a one-off payment of £25. This will help the council to reach its recycling target to 60% of household. Blue bins can be ordered on the ECDC website.

As the new local plan moves forward some normality has returned to the amount of planning applications being received. Reducing the amount of work the department is having to deal with particularly unsuitable applications.

The Ely southern bypass is progressing well. If travelling to Ely you should allow for temporary speed limits and short periods of temporary traffic lights on the A142 at Stuntley Causeway and Angel Drove. These will only operate between 0930 – 1530.

Councillors commented on the continued fly tipping on the fen roads. **Councillor Alderson** to speak with ECDC and get this removed.

6. Minutes of previous Meeting

Approved as correct.

7 (1) Parish Council Grant Fund

An application had been received for up to £250 for a Royal wedding tea party for the village.
Approved. **Clerk** to inform the Events Team that up to £250 would be available payable on production of receipts.

7(2) Financial Reports

Clerk is in discussions with the insurance company to add the additional streetlights and new playground but also to ensure the PC is only paying for cover required.
Clerk is also finalising the grant payments for the new playground.

7(3) Parish Council Members Meetings

There were none.

7(4) Play Spaces

The Grand Opening event was a success with approximately 40-50 people attending. Thanks to Cath Tayleur, Natasha Bridgeman and Debbie Quilter for organizing. Kompan had a photographer and videographer with them and will be passing on photos to us. The Clerk had obtained one quote with one to follow for the hedge cutting around the playing field. **Clerk** to continue to obtain more quotes.

7(5) Rights of Way

Little Fen Drove has been part repaired but not completed. The junction of Byway 6 and Great Lane is also becoming very waterlogged and damaged **Clerk** to write to Highways and County councillor.

7(6) 24Acres Committee Report

Nothing to report. **Clerk** to inform committee of new mowing facility.

7(7) Friends of Reach Wood

Nothing to report.

8. New Councillor

Two people had put themselves forward to be co-opted on to the council. Following meetings with both, the Council agreed to appoint Nathan Bridgeman as the new councillor. **Councillor Cane** to inform both candidates and **Clerk** to complete the necessary paperwork.

9. Mowing Contract

Following the cricket club mowing discussion earlier in the meeting and the difficulty in obtaining additional quotation the PC agreed to continue with the present contractor minus the 24Acre cuts. **Clerk** to inform the contractor.

10. GOBA agreement and Reach Lode

The GOBA mooring arrangement is now in place for the next 5 years. GOBA would like to do some dredging work at The Point on The Hythe, **Councillor Ward** to contact GOBA to discuss.

11. New playground guideline compliance

The PC have received the handover pack from Kompan. The playground has been installed to European standards EN1176 and EN1177. Now that the playground has been handed over, it is the responsibility of the operator to ensure the equipment is safe. To comply with this, we will need an emergency contact sign **Councillor de Giorgio-Miller** to arrange.
The PC are also responsible for carrying out routine weekly visual inspections. Kompan offer operation inspections and annual inspections which follow on from these. **Councillor de Giorgio-Miller** to obtain quotes from several companies.

12. Ideas for old playground

Discussion took place to narrow down the choice of ideas for this area. **Councillor de Giorgio-Miller** to look at costs for concrete table tennis tables, basketball nets & picnic benches. Increased noise was discussed. **Councillor de Giorgio-Miller** to contact the local homes to understand any concerns they may have.

13. GDPR

Clerk, Councillors Cane and McMillan to work together to produce an action plan, using the NALC check list.

14. Minutes, Social media policy & email policy update.

Previously the PC had decided not to publish draft minutes, this is not best practice. In future draft minutes shall be published within 7 days of the PC meeting.
The Social media policy & email policy were approved.

15. Draft revised National Planning Policy Framework

Councillor Ward to review and make recommendation to Council should she think appropriate.

16. Information Items/AOB

An invitation had been received for the ECDC Civic reception. No councillors were able to attend.

Councillor Cane had invited Grahame Radford to attend the Mayors procession and reception at Reach Fair in acknowledgement of his many years of hard work at the Fair.

17. Payments

E.on – Power on the green £7.94	S Bailey – Salary £1313.39
S Bailey – Stationary £72.96	CR Contracting – Hedge cutting £126.00
Fuse – Office 365 & exchange plan £525.55	Reach Village Centre – 6 months hire of shed for storage £360
N Bridgeman – Playground opening – Grant Fund £54.75	C Tayleur – Playground opening – Grant Fund £105.40
Village Centre – decorating – Grant fund £1845.00	Kompan – New playground £16,560.08

The date of the **next meeting** will be **Wednesday 2nd May 2018 at 7.00pm** prior to the Annual Parish Meeting. The Agenda for the meeting will be issued by the previous Wednesday and can be accessed from the Parish Council area of the Reach website (www.reach-village.co.uk).

Chairman:

Date:



PARISH COUNCIL

Minutes of Reach Parish Council meeting held on: Wednesday 2nd May 2018

Attendance

Charlotte Cane	Chair	Present
Hilary Fielding	Vice Chair	Present
Alex de Giorgio-Miller	Councillor	Present
Diana Ward	Councillor	Present
Andrew Trump	Councillor	Present
David McMillan	Councillor	Present
Nathan Bridgeman	Councillor	Present
Susan Bailey	Clerk	Present
Allen Alderson	District Councillor	Present
Joshua Schumann	County Councillor	Not Present

1. Apologies for absence

Councillor Schumann had given notice that he would be late after attending another meeting.

2. Election of Officers; Chairman, and Vice Chairman.

It was proposed, by Councillor Ward that Councillor Cane should continue as Chair for an additional year. This is due to the Council being involved in extraordinary business at the moment, and that the Standing Orders were in the process of being updated. Seconded by Councillor McMillan. Unanimously agreed.
Councillor Fielding was elected vice Chair, proposed by Councillor Cane and seconded by Councillor Ward.

3. Declaration of Interests

There were none.

4. Minutes of previous Meeting

Approved as correct. The GDPR meeting had been postponed due to additional meeting being attended. This meeting will be rearranged during May.

5. Election of additional officers, Rights of Way Play Spaces, & Data protection officer

The Council deferred appointing a Data Protection Officer as the legislation regarding this is still changing and it may not be necessary.

Play spaces officer – Councillor de Giorgio-Miller.

Rights of way officer – Councillor Fielding

Data officer – Councillor Trump

6.1 Reach Grant Fund

Nothing to report.

6.2 Finance

The first precept payment had been received & ECDC had stated that their grant payment would be with the PC by the end of the week. Cash flow issues had now reduced. The Clerk had received a quote for the maintenance of the War memorial. **Clerk** to get more quotes.

6.3 Parish Council Members

Councillor Ward had had discussions with GOBA, who will now submit a quote for the work they wish to do on the mooring at The Hythe.

Councillor Bridgeman had been contacted by the Red Lion Swaffham Prior to discuss the old playground equipment. Although it was noted that some of the equipment had already been requested by a resident, **Councillor de Giorgio-Miller** to continue the discussions

6.4 Play Spaces

New playground: After some research of appropriate wording, Councillor de Giorgio-Miller had obtained a quote from Icon signs in Newmarket to design and produce a sign for the playground.

Sign would be solid aluminium with extrusion on the back with D-Clips that would attach to the railings. Design and layout £30, 600 x 420mm solid aluminium sign with digital matt laminated graphics and fittings £95 + vat. Approved with the addition of a grid reference.

Weekly inspection documents completed. A graffiti remover had been purchased which has been effective on removing the graffiti so far. Kompan are coming to fix the couple of items flagged up in inspections. A resident had queried that the cycle trainer offered little resistance but I am told that the tension on cycle trainer cannot be altered.

Playground inspection quotes:

Kompan - £115.89 for operational inspections, £475.43 for annual inspections

Fenland Leisure Products (who we've used for previous inspections on old playground) - £120 for annual operational inspections (same price as previously despite increase in size)

Play maintain - £120 for annual operational inspections.

Council agreed to continue with Fenland Leisure. First operational inspection to be scheduled for 1 month before the one-year warranty ends to ensure any issues are still covered.

Ideas for old playground:

Still waiting for quotes for the three options discussed at the last meeting (picnic benches, table tennis and basketball. Hope to update at the next meeting.

A note had been put through the door of the three closest neighbours. One has replied and expressed support for the idea of picnic benches and concern at the repetitive noise from basketball. No response from the others **Councillor Bridgeman** to discuss with the residents.

General:

The gate post at the entrance to the field due to be fixed.

Hedge cutting quotes obtained by Clerk

Garden works tree surgery - £6525 +VAT

Acacia tree surgery - £8250 +VAT

CR contracting - £1450

Council approved the CR Contracting quote. **Clerk** to give the go ahead

6.5 Rights of Way

Nothing to report.

6.6 24Acres Committee

The planting is establishing well and, as a natural woodland, we are generally letting nature get on with it. There will be some limited maintenance, re-staking etc, in recent weeks and some strimming as the summer progresses.

The roe deer presence is a potential concern given impact of an over-browsed under-storey. There were ten deer in the adjacent field recently.

We await to see how new arrangements agreed between the PC and the cricket club for the mowing of the 24 Acres work out in practice.

6.7 Friends of Reach wood

It had been suggested; since it has been a late spring, that mid-June would be fine for the first cut of Reach Wood meadow. This one-off extra cut was agreed so that the ragwort issue could be dealt with via Ian Froggatt from the Woodland Trust, a little later in the summer. A second cut will be needed in September. On both occasions a bar-cutter will be used.

7. Information Items/AOB

It was discussed that the planning procedure had changed. Should an application go to appeal, no one can now make any additional representations. Therefore, the Council must ensure that all points, in detail, are made in the initial response.

An invitation had been received for the opening of Th Hive Leisure Centre in Ely. No Councillor was available to attend.

Waterbeach Incinerator – Council decided that the situation would be monitored, but no response was required at present.

8. Payments

E.on – Power on the green	£8.79	E.on – Street lights electricity	£567.13
Came & Company – insurance	£1025.53	Getmapping – parish online access	£60.00
CR Contracting – mowing contract	£304		

9. Forum for members of the public

There were none.

10. Planning Applications

There were none.

The date of the **next meeting** will be **Wednesday 6th June 2018 at 7.30pm**. The Agenda for the meeting will be issued by the previous Wednesday and can be accessed from the Parish Council area of the Reach website (www.reach-village.co.uk).

Chairman:

Date:

Letter from the Vicarage

Summer's nearly here (we hope!), which means BBQs, garden parties and fetes. The St Mary's Church Fete will take place on June 9th from 2 - 4pm, in and around St Mary's. We're delighted that once again it will also mark the start of the Burwell Festival.



It's a traditional fete, and the theme this year will be the colours 'red and green'. There will be the usual attractions in the churchyard – stalls, tombolas and a Grand Raffle, with great prizes. We'll have games for young and old alike, including the ever popular bowling for a pig and live music from Burwell Folk. If you need refreshment we will have cream teas in the Guildhall, ice creams in the church and a BBQ outside. Inside the church, there will be the Art, Craft and Flower exhibition of Burwell Festival, plus additional craft stalls. Look out for posters nearer the time, with more details of our other attractions, including parachuting from the tower, for very brave teddies! Admission is free so it's a fun afternoon for all the family. Proceeds will be divided between the church and other charities. Looking ahead to July, the Little Bears @ St Mary's Teddy Bears' picnic is on Thursday 5th July at the Vicarage.



In Reach, I'm very much hoping to meet many of you at the open meeting that we're planning, where we will present the latest version of the plans for developing the church building, and also discuss the surveyor's report about the arch behind the church. We're working on a

date that is convenient for as many as possible. As the summer goes on, please look out for posters with updates about special services and events, in Reach and in Burwell, and on our website and Facebook pages. I send out a regular email about activities for young people, children and families. If you'd like to be added to that list, you can sign up via our website <http://www.stmarysburwell.org.uk/data-consent-form/>. There's also a button on our Facebook page to take you to that page directly.

Both our churches, St Etheldreda's in Reach, and St Mary's in Burwell, are open all day, every day, for anyone to pop in, to look around, light a candle, say a prayer. Please get in touch if you would like more

information about weddings, christenings and baby thanksgivings, or if you would value an opportunity to chat. And for those who said they missed seeing a picture of my dog, Echo, here you are. We're often out and about, so please do say hello!

Revd Dr Eleanor Williams,
Vicar of Burwell with Reach
01638 741262
vicar@stmarysburwell.org.uk

THE STAINED GLASS MUSEUM

Study Day

Stained Glass in Huntingdonshire Churches



Coach trip guided by Dr Jasmine Allen and Reverend Stephen Day (author of *Stained Glass in Huntingdonshire*, currently available in the Museum shop).

Friday 8 June 2018

Departing Ely (by coach) at 10.30am. Arrive back at 5.30pm

Open to all. Tickets: £30 (Lunch not included)

Tickets available from the museum shop or at www.stainedglassmuseum.com

Registered Charity No. 1160942



Church Services

June 2018	St Mary's Burwell	St Etheldreda's Reach
Sunday 3 rd Trinity 1	8.00 am Holy Communion 10.00am All Age service with baptism	
Wednesday 6 th	10.00am Holy Communion 11.00am Holy Communion at Ash Grove	
Thursday 7 th	10.00am Little Bears	8.15 am Morning Prayer
Sunday 10 th Trinity 2	10.00am Holy Communion 7.00pm Sunday @ 7	8.00am Holy Communion
Wednesday 13 th	10.00am Holy Communion	
Thursday 14 th		8.15am Morning Prayer
Sunday 17 th Trinity 3	8.00 am Holy Communion 10.00am Holy Communion 3.00pm Carers' Service	
Wednesday 20 th	10.30am Holy Communion at Ness Court	
Thursday 21 st		8.15am Morning Prayer
Sunday 24 th Trinity 4	8.00am Holy Communion 10.00am Holy Communion 4.00pm Messy Church	
Wednesday 27 th	10.00am Holy Communion	
Thursday 28 th		8.15am Morning Prayer
July 2018	St Mary's Burwell	St Etheldreda's Reach
Sunday 1 st Trinity 5	8.00 am Holy Communion No 10am service – ordination at Ely Cathedral	
Wednesday 4 th	10.00am Holy Communion 11.00am Holy Communion at Ash Grove	
Thursday 5 th	10.00am Little Bears Teddy Bears' picnic at the Vicarage.	8.15am Morning Prayer
Sunday 8 th Trinity 6	10.00am Holy Communion 7.00pm Sunday @ 7	8.00am Holy Communion
Wednesday 11 th	10.00am Holy Communion	
Thursday 12 th		8.15am Morning Prayer
Sunday 15 th Trinity 7	8.00am Holy Communion 10.00am Holy Communion	
Wednesday 18 th	10.30am Holy Communion at Ness Court	
Thursday 19 th		8.15am Morning Prayer
Sunday 22 nd Trinity 8	8.00am Holy Communion 10.00 am Holy Communion 4.00pm Messy Church	
Wednesday 25 th	10.00am Holy Communion	
Thursday 26 th		8.15am Morning Prayer
Sunday 29 th Trinity 8		10.00am Holy Communion

Bus Timetable

Reach is served by the 10/10A bus service, provided by Stagecoach.

A summary of all buses serving Reach and/or Swaffham Prior Monday to Saturday is shown below.

Please note that there is no bus service at all on Sundays.

Service No:	10	10	10	10	10	10	10	10	10	10	10	10
	Mon - Sat	Mon - Sat	Mon - Sat	Mon - Sat	Mon - Sat	Mon - Sat	Mon - Sat	Mon - Sat	Mon - Sat	Mon - Sat	Mon - Sat	Mon - Sat
Newmarket (Guineas Station)			0814	0914	1014	1114	1214	1314	1414	1514	1614	1714
Burwell (Manchetts Ness Road)	0619	0649	0842	0942	1042	1142	1242	1342	1442	1542	1642	1742
Reach	0634	0704	0857		1057		1257		1457	1557	1657	1757
Swaffham Prior	0639	0709	0902	0959	1102	1159	1302	1359	1502	1602	1702	1802
Cambridge (Drummer Street)	0720	0755	0943	1043	1143	1243	1343	1443	1543	1643	1743	1843

Service No:	10	10	10	10	10	10	10	10	10	10	10	10
	Mon - Sat	Mon - Sat	Mon - Sat	Mon - Sat	Mon - Sat	Mon - Sat	Mon - Sat	Mon - Sat	Mon - Sat	Mon - Sat	Mon - Sat	Mon - Sat
Cambridge (Drummer Street)	0650	0750	0850	0950	1050	1150	1250	1350	1450	1550	1650	1750
Swaffham Prior	0727	0827	0930	1027	1130	1227	1330	1427	1530	1627	1722	1827
Reach	0733	0833		1033		1233		1433		1633		1833
Burwell (Hawthorn Way)	0743	0843	0943	1043	1143	1243	1343	1443	1543	1643	1735	1843
Newmarket (Guineas Station)	0813	0913	1013	1113	1213	1313	1413	1513	1613	1713	1810	

A full timetable can be downloaded from www.reach-village.co.uk/bus_service.html

Please note that the bus stops at a number of stops in Burwell – those listed are just timing points

Diary Dates: June 2018

June	Event	Location	Time
Wednesday 6	Parish Council Meeting	Village Centre	7.30pm
Thursday 7	Recycling Day (Blue)		
Saturday 9	Burwell Farmers Market	Burwell	9.30am – 12.30pm
Saturday 9	Ely Farmers Market	Ely	8.30am – 2pm
Saturday 9	St Mary's Church Fete	St Mary's Churchyard	2pm
Wednesday 13 – Saturday 16	Gilbert & Sullivan Cox and Box	Swaffham Bulbeck Summer Theatre	See Page 25
Thursday 14	Recycling Day (Green)		
Saturday 16	Burwell Carnival	Burwell	
Sunday 17	Village Fete	Lode	12 noon - 4pm
Tuesday 19	Mobile Library	Village Green	2.15pm
Tuesday 19	Burwell Museum Coach Trip	'Gates' Garden Centre and Stamford	See page 18
Tuesday 19	Swaffham Prior Village Gardeners	Swaffham Prior Village Hall	8pm
Wednesday 20	Village Centre Committee Meeting	Village Centre	See Page 16
Thursday 21	Recycling Day (Blue)		
Friday 22	Ladies Dinner	Dykes End	Look out for further information
Saturday 23	Ely Farmers Market	Ely	8.30am – 2pm
Saturday 23 and Sunday 24	Cambridgeshire Food and Drink Festival	East of England Showground	See Page 38
Wednesday 27	Lunchbreak Café	St Mary's Church, Burwell	12 noon – 2pm
Thursday 28	Recycling Day (Green)		
Saturday 30	Swaffham Bulbeck Street Market	Swaffham Bulbeck	From 11am

Diary Dates: July 2018

July 2018	Event	Location	Time
Sunday 1	Sports Day	Top Field / Sports Field	1pm
Wednesday 4	Parish Council Meeting	Village Centre	7.30pm
Thursday 5	Recycling Day (Blue)		
Thursday 5	St Mary's Teddy Bears Picnic	The Vicarage Garden, 22 Isaacson Road, Burwell	10am – 11.30am
Saturday 7 and Sunday 8	Cambridge Open Studios		See Page 14
Thursday 12	Recycling Day (Green)		
Saturday 14	Ely Farmers Market	Ely	8.30am – 2pm
Saturday 14	Burwell Farmers Market	Burwell	9.30am – 12.30pm
Saturday 14 and Sunday 15	Cambridge Open Studios		See Page 14
Monday 16	Burwell Museum Coach Trip	Boat Trip and Shopping at Wroxham	See page 18
Tuesday 17	Mobile Library	Village Green	2.15pm
Wednesday 18	Village Centre Committee Meeting	Village Centre	
Wednesday 18	Discussion about the Church Plans	St Etheldreda	7pm
Thursday 19	Recycling Day (Blue)		
Saturday 21 and Sun 22	Cambridge Open Studios		See Page 14
Wednesday 25	Lunchbreak Café	St Mary's Church, Burwell	12 noon – 2pm
Thursday 26	Recycling Day (Green)		
Saturday 28	Ely Farmers Market	Ely	8.30am – 2pm
Saturday 28 and Sunday 29	Cambridge Open Studios		See Page 14

Contact Information

Parish Council		
Chair	Charlotte Cane	741064
Councillor	Alex de Giorgio-Miller	07771 348013
Vice Chair	Hilary Fielding	741853
Councillor	David McMillan	741259
Councillor	Andrew Trump	07980 955490
Councillor	Diana Ward	744210
Clerk	Susan Bailey	743794
Rights of Way Officer	Hilary Fielding	741853
County Councillor	Joshua Schmann	
District Councillor	Allen Alderson	741744
Village Centre		
Chair	Andrew Towers	
Finance	Andrew Trump	
Bookings	Grahame Radford	742814
Marquee Bookings	Andrew Hall	743737
Grant Scheme (Formerly the Amenity Fund)		
Applications to:	Charlotte Cane	741064
Burwell and Reach Car Scheme		01638 742543
Church		
Vicar	Eleanor Williams	741262
Reader in Training	Frances Leadon	741770
Priest in Retirement	Reverend David King	742924
Parochial Church Council Member	Pam King	742924
Churchwarden at Burwell/Reach	Simon Rogers	741205
Churchwarden at Burwell/Reach	Sarah Wingate	742498
Emergencies		
Electricity (Eastern Electric)		0800 783 8838
Police (Emergency)		999
Police (Non-emergency)		101
Water (Anglian Water)		08457 145145
Doctors, Burwell		
Appointments and Emergencies		741234
Enquiries		743602
Community Nurses		742382
Surgery Hours	Mon 8.30am to 6.00pm with extended hours on a Monday please phone the surgery for details	